

\$999,900 - Rr 84 Highway 43, Rural Grande Prairie No. 1, County of

MLS® #A2000846

\$999,900

0 Bedroom, 0.00 Bathroom,
Land on 12.50 Acres

NONE, Rural Grande Prairie No. 1, County of, Alberta

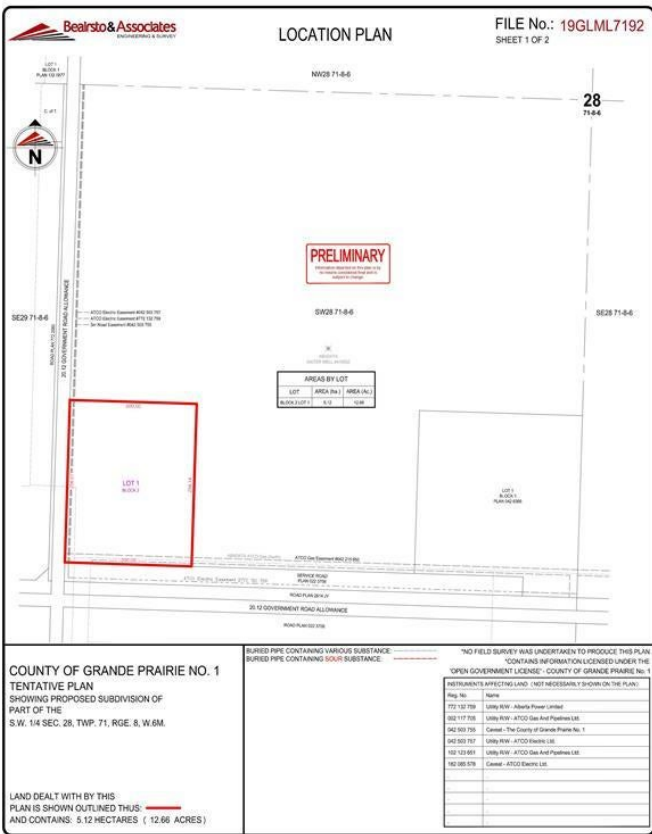
Fantastic location to set up your business. One of the few industrial locations to set up on west of Grande Prairie with Highway 43 frontage and access. Whether you have an oilfield service company, an agricultural enterprise or a commercial endeavor, you will surely benefit from this great exposure. 12+ acres zoned RM-4 just 8.5 miles west of Grande Prairie city limits and just outside the town of Wembley, directly across the Highway from Tenaris. Great setup with service road directly in front of property, all services close by and great slope on the property. At about 80k per acre you will be hard pressed to find a comparable property.

Essential Information

MLS® #	A2000846
Price	\$999,900
Bathrooms	0.00
Acres	12.50
Type	Land
Sub-Type	Industrial Land
Status	Active

Community Information

Address	Rr 84 Highway 43
Subdivision	NONE



City	Rural Grande Prairie No. 1, County of
County	Grande Prairie No. 1, County of
Province	Alberta
Postal Code	T0H 3S0

Additional Information

Date Listed	September 6th, 2022
Days on Market	1079
Zoning	RM-4

Listing Details

Listing Office	RE/MAX Grande Prairie
----------------	-----------------------

Data is supplied by Pillar 9â„¢ MLS® System. Pillar 9â„¢ is the owner of the copyright in its MLS® System. Data is deemed reliable but is not guaranteed accurate by Pillar 9â„¢. The trademarks MLS®, Multiple Listing Service® and the associated logos are owned by The Canadian Real Estate Association (CREA) and identify the quality of services provided by real estate professionals who are members of CREA. Used under license.