

\$375,000 - 75005 Hwy 845 Highway, Rural Lethbridge County

MLS® #A2159881

\$375,000

0 Bedroom, 0.00 Bathroom,
Land on 3.77 Acres

NONE, Rural Lethbridge County, Alberta

3.77 acres bordering Hwy 4 & 845. High traffic count and good visibility for your business. Fully fenced with security gate, gravel lot, perimeter lighting, 200 amp service, 1000 gallon water tank, septic system.

Essential Information

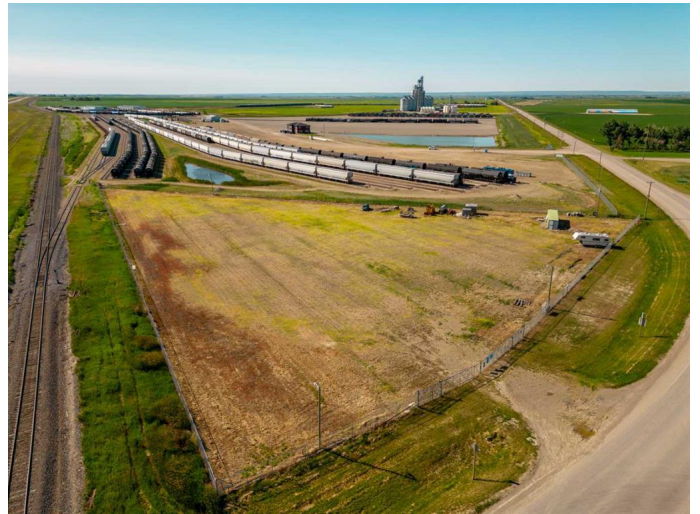
| | |
|-----------|-----------------|
| MLS® # | A2159881 |
| Price | \$375,000 |
| Bathrooms | 0.00 |
| Acres | 3.77 |
| Type | Land |
| Sub-Type | Commercial Land |
| Status | Active |

Community Information

| | |
|-------------|-------------------------|
| Address | 75005 Hwy 845 Highway |
| Subdivision | NONE |
| City | Rural Lethbridge County |
| County | Lethbridge County |
| Province | Alberta |
| Postal Code | T1K 8G9 |

Additional Information

| | |
|----------------|-------------------|
| Date Listed | August 19th, 2024 |
| Days on Market | 366 |
| Zoning | RC |



Listing Details

Listing Office Royal LePage Blue Sky

Data is supplied by Pillar 9â,,ç MLSÂ® System. Pillar 9â,,ç is the owner of the copyright in its MLSÂ® System. Data is deemed reliable but is not guaranteed accurate by Pillar 9â,,ç. The trademarks MLSÂ®, Multiple Listing ServiceÂ® and the associated logos are owned by The Canadian Real Estate Association (CREA) and identify the quality of services provided by real estate professionals who are members of CREA. Used under license.