

\$79,000 - Ne 08-48-25w3 Block B, Plan 101521415 Ext 3, Lashburn

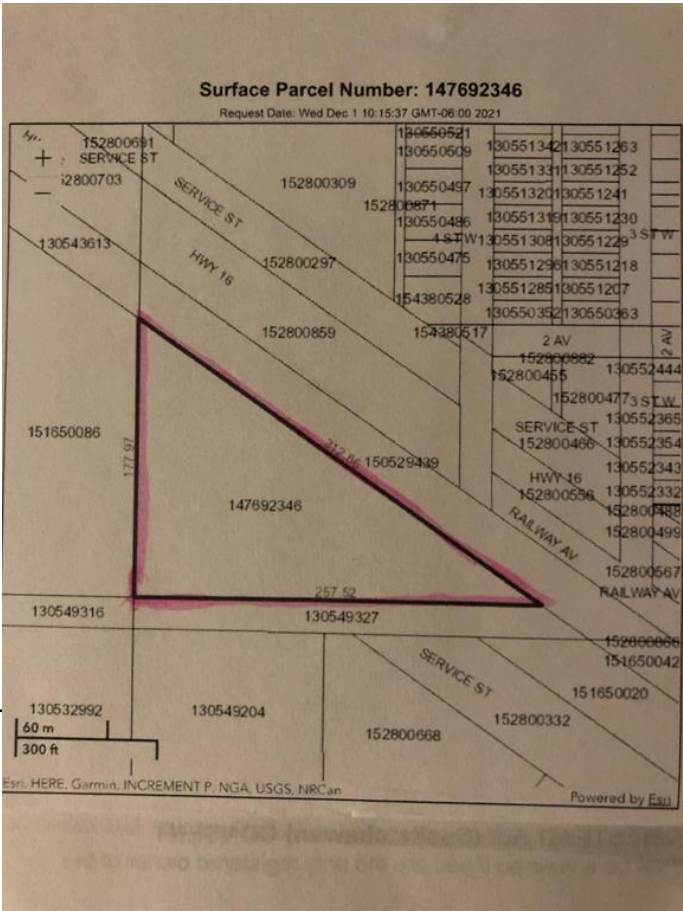
MLS® #A2172543

\$79,000

0 Bedroom, 0.00 Bathroom,
Land on 5.66 Acres

NONE, Lashburn, Saskatchewan

This 5.66 acre parcel is in the town of Lashburn . This bare land property is located in the south/west portion of the town and south of Highway 16.



Essential Information

MLS® #	A2172543
Price	\$79,000
Bathrooms	0.00
Acres	5.66
Type	Land
Sub-Type	Residential Land
Status	Active

Community Information

Address	Ne 08-48-25w3 Block B, Plan
Subdivision	NONE
City	Lashburn
County	Saskatchewan
Province	Saskatchewan
Postal Code	S0M 1H0

Additional Information

Date Listed	October 9th, 2024
Days on Market	313
Zoning	Residential

Listing Details

Data is supplied by Pillar 9â„¢ MLS® System. Pillar 9â„¢ is the owner of the copyright in its MLS® System. Data is deemed reliable but is not guaranteed accurate by Pillar 9â„¢. The trademarks MLS®, Multiple Listing Service® and the associated logos are owned by The Canadian Real Estate Association (CREA) and identify the quality of services provided by real estate professionals who are members of CREA. Used under license.