

# \$714,500 - 4626 31 Avenue S, Lethbridge

MLS® #A2175331

**\$714,500**

3 Bedroom, 3.00 Bathroom, 2,013 sqft

Residential on 0.10 Acres

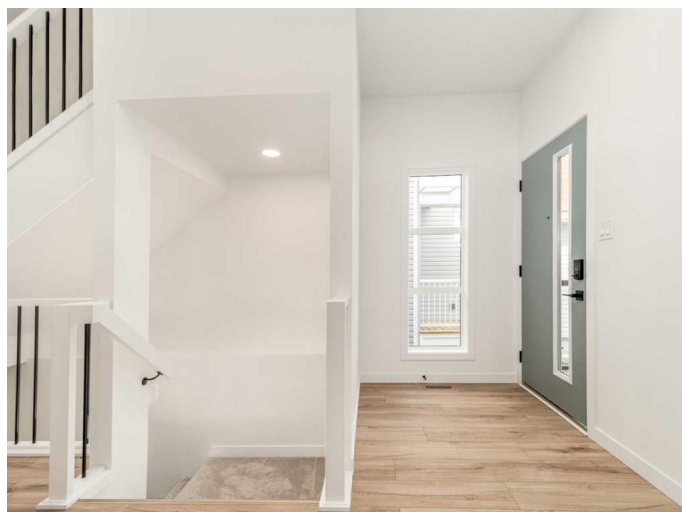
Discovery, Lethbridge, Alberta

Welcome to the "Rowan" By Avonlea Homes. This particular home backs onto the pond in Southbrook. Enjoy the view out of your living room and dining room. On those warm days Enjoy the wildlife with your favorite Coffee off your back deck. Very functional floor plan with large mudroom and walk through pantry off the over-sized garage. Tall ceilings and lots of glass throughout the main floor for that extra natural light. Open staircase leads you to a large primary bedroom You will enjoy the 5 piece ensuite with dual sinks, and separate tub and shower. Lots of room for those clothes in the walk in closet as well. The bonus room separates the primary bedroom from the 2 kids bedrooms, great for privacy. There is also the convenience of an actual Laundry room upstairs. Basement is undeveloped but could have another bedroom, bathroom and family room. Excellent location close to park, school, play ground, and all the amenities the south side has to offer. New Home Warranty. Home is virtually staged.

Built in 2024

## Essential Information

|            |           |
|------------|-----------|
| MLS® #     | A2175331  |
| Price      | \$714,500 |
| Bedrooms   | 3         |
| Bathrooms  | 3.00      |
| Full Baths | 2         |



|                |             |
|----------------|-------------|
| Half Baths     | 1           |
| Square Footage | 2,013       |
| Acres          | 0.10        |
| Year Built     | 2024        |
| Type           | Residential |
| Sub-Type       | Detached    |
| Style          | 2 Storey    |
| Status         | Active      |

### **Community Information**

|             |                  |
|-------------|------------------|
| Address     | 4626 31 Avenue S |
| Subdivision | Discovery        |
| City        | Lethbridge       |
| County      | Lethbridge       |
| Province    | Alberta          |
| Postal Code | T1K8J8           |

### **Amenities**

|                |                        |
|----------------|------------------------|
| Parking Spaces | 4                      |
| Parking        | Double Garage Attached |
| # of Garages   | 2                      |

### **Interior**

|                   |  |
|-------------------|--|
| Interior Features | Kitchen Island, Pantry, Walk-In Closet(s)                  |
| Appliances        | Dishwasher, Microwave, Range Hood, Refrigerator, Gas Range |
| Heating           | Forced Air   |
| Cooling           | None   |
| Fireplace         | Yes  |
| # of Fireplaces   | 1  |
| Fireplaces        | Gas  |
| Has Basement      | Yes  |
| Basement          | Full, Unfinished   |

### **Exterior**

|                   |                                    |
|-------------------|------------------------------------|
| Exterior Features | None                               |
| Lot Description   | Back Yard                          |
| Roof              | Asphalt Shingle                    |
| Construction      | Concrete, Vinyl Siding, Wood Frame |
| Foundation        | Poured Concrete                    |

**Additional Information**

|                |                     |
|----------------|---------------------|
| Date Listed    | November 21st, 2024 |
| Days on Market | 165                 |
| Zoning         | RCL                 |

**Listing Details**

|                |                                 |
|----------------|---------------------------------|
| Listing Office | RE/MAX REAL ESTATE - LETHBRIDGE |
|----------------|---------------------------------|

Data is supplied by Pillar 9â„¢ MLS® System. Pillar 9â„¢ is the owner of the copyright in its MLS® System. Data is deemed reliable but is not guaranteed accurate by Pillar 9â„¢. The trademarks MLS®, Multiple Listing Service® and the associated logos are owned by The Canadian Real Estate Association (CREA) and identify the quality of services provided by real estate professionals who are members of CREA. Used under license.