

\$15,000 - 56 Sifton Crescent, Lougheed

MLS® #A2187077

\$15,000

0 Bedroom, 0.00 Bathroom,
Land on 0.35 Acres

Lougheed, Lougheed, Alberta

Build your dream home in the quiet Village of Lougheed on this lot. Easy access to Wainwright or Camrose. Enjoy the peaceful community while still having all the amenities close by. No building timeline commitment

Essential Information

| | |
|-----------|------------------|
| MLS® # | A2187077 |
| Price | \$15,000 |
| Bathrooms | 0.00 |
| Acres | 0.35 |
| Type | Land |
| Sub-Type | Residential Land |
| Status | Active |

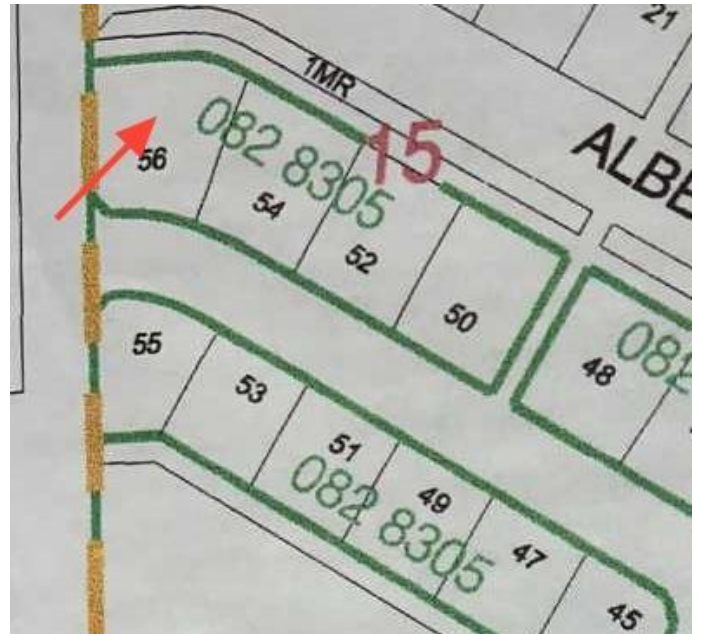
Community Information

| | |
|-------------|--------------------|
| Address | 56 Sifton Crescent |
| Subdivision | Lougheed |
| City | Lougheed |
| County | Flagstaff County |
| Province | Alberta |
| Postal Code | T0B 2V0 |

Additional Information

| | |
|----------------|--------------------|
| Date Listed | January 14th, 2025 |
| Days on Market | 219 |
| Zoning | R |

Listing Details



Listing Office

CIR Realty

Data is supplied by Pillar 9â„¢ MLSÂ® System. Pillar 9â„¢ is the owner of the copyright in its MLSÂ® System. Data is deemed reliable but is not guaranteed accurate by Pillar 9â„¢. The trademarks MLSÂ®, Multiple Listing ServiceÂ® and the associated logos are owned by The Canadian Real Estate Association (CREA) and identify the quality of services provided by real estate professionals who are members of CREA. Used under license.