

# \$1,600,000 - 5801 Lakeshore Drive, Sylvan Lake

---

MLS® #A2194797

**\$1,600,000**

0 Bedroom, 0.00 Bathroom,  
Land on 2.46 Acres

NONE, Sylvan Lake, Alberta

Perfectly located off of Lakeshore Drive - 2.46 acres of DEVELOPMENT LAND! The purpose of the Future Designation zoning is to reserve land for future subdivision. There is currently an older home and large quonset on the property. This is an ideal location for a future residential development.

## Essential Information

MLS® #	A2194797
Price	\$1,600,000
Bathrooms	0.00
Acres	2.46
Type	Land
Sub-Type	Residential Land
Status	Active

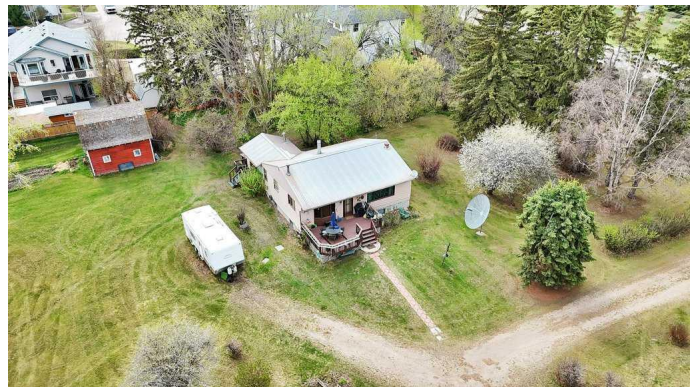
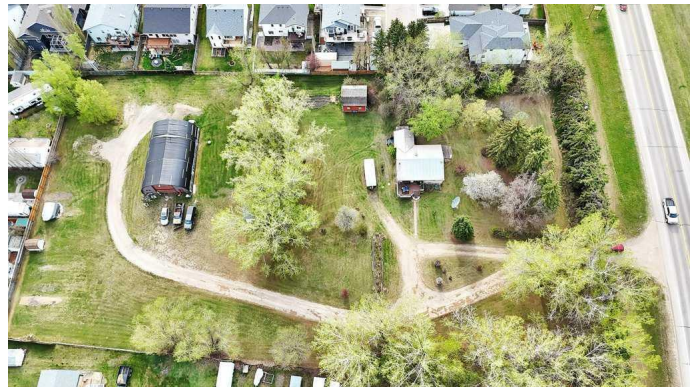
## Community Information

Address	5801 Lakeshore Drive
Subdivision	NONE
City	Sylvan Lake
County	Red Deer County
Province	Alberta
Postal Code	T4S 1T9

## Exterior

Lot Description	Level, See Remarks
-----------------	--------------------

## Additional Information



Date Listed	February 14th, 2025
Days on Market	188
Zoning	FD

### **Listing Details**

Listing Office	RE/MAX real estate central alberta
----------------	------------------------------------

Data is supplied by Pillar 9â„¢ MLSÂ® System. Pillar 9â„¢ is the owner of the copyright in its MLSÂ® System. Data is deemed reliable but is not guaranteed accurate by Pillar 9â„¢. The trademarks MLSÂ®, Multiple Listing ServiceÂ® and the associated logos are owned by The Canadian Real Estate Association (CREA) and identify the quality of services provided by real estate professionals who are members of CREA. Used under license.