

\$225,000 - 5376 Len Thompson Drive, Lacombe

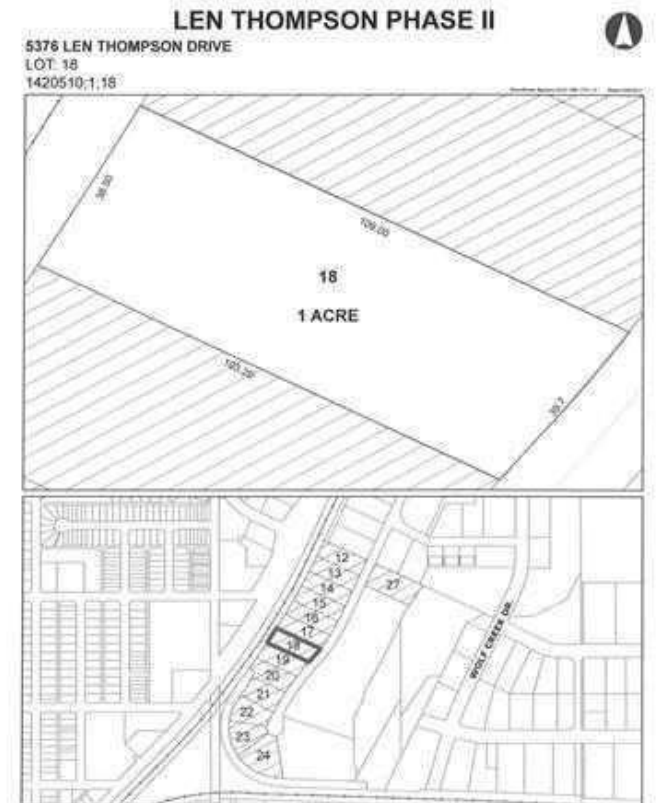
MLS® #A2195899

\$225,000

0 Bedroom, 0.00 Bathroom,
Land on 1.00 Acres

Wolf Creek Industrial Park, Lacombe, Alberta

15 Acre industrial park in the heart of Lacombe. Easy access to Highway 2, 2A and 12. Great location across from the new Public Works shop and yard site. On pavement. Great visibility from highway 2A. Zoned light industrial and there is potential for commercial / retail uses as well. Shovel ready with street lights and services to lot. Lots are 1 to 1.5 acres but could easily be amalgamated for larger parcel needs.



Essential Information

MLS® #	A2195899
Price	\$225,000
Bathrooms	0.00
Acres	1.00
Type	Land
Sub-Type	Industrial Land
Status	Active

Community Information

Address	5376 Len Thompson Drive
Subdivision	Wolf Creek Industrial Park
City	Lacombe
County	Lacombe
Province	Alberta
Postal Code	T4L 2H3

Additional Information

Date Listed	February 19th, 2025
-------------	---------------------



Days on Market 181

Zoning I1

Listing Details

Listing Office Royal LePage Lifestyles Realty

Data is supplied by Pillar 9â„¸ MLSÂ® System. Pillar 9â„¸ is the owner of the copyright in its MLSÂ® System. Data is deemed reliable but is not guaranteed accurate by Pillar 9â„¸. The trademarks MLSÂ®, Multiple Listing ServiceÂ® and the associated logos are owned by The Canadian Real Estate Association (CREA) and identify the quality of services provided by real estate professionals who are members of CREA. Used under license.