

\$469,900 - 410 Stone Place Sw, Redcliff

MLS® #A2199946

\$469,900

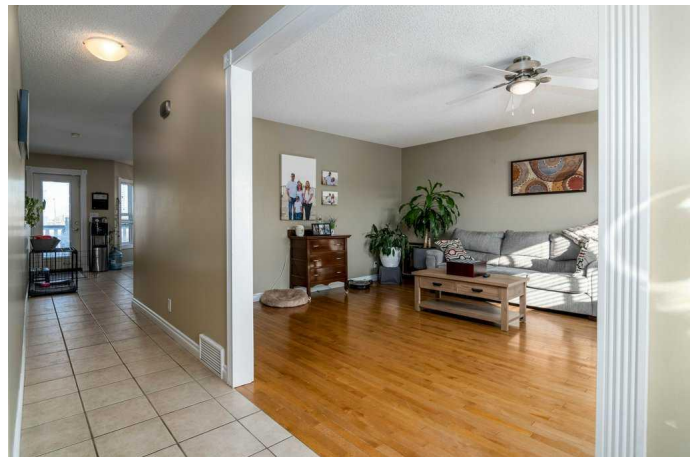
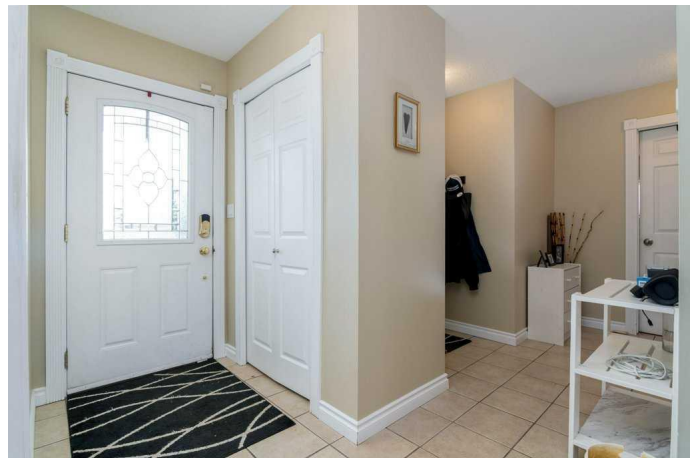
5 Bedroom, 2.00 Bathroom, 1,506 sqft

Residential on 0.15 Acres

NONE, Redcliff, Alberta

Charming 5-Bedroom Bungalow in a Quiet Court Location – 410 Stone Place SW, Redcliff

Nestled in a serene court setting with no rear neighbors, this beautiful 1506 sqft bungalow offers the perfect family retreat. Featuring 5 spacious bedrooms and 2 well-appointed bathrooms, this home is ideal for growing families or those who love having extra space. The inviting layout includes a generous family room with a dry bar, perfect for entertaining or relaxing with loved ones. The large garden doors from both the dining area and the master bedroom open onto an expansive 10'4" x 40' deck, creating a seamless indoor-outdoor flow, ideal for enjoying sunny days and tranquil evenings. Inside, you'll find elegant hardwood floors that run throughout the main living areas, adding warmth and character to the space. The fully fenced and landscaped yard offers privacy and a safe haven for children and pets. Plus, there's ample RV parking, making it a great choice for those with adventurous spirits. The home is complete with a finished and heated 24x21 garage, ensuring year-round comfort and convenience. Additional features include a full appliance package with a washer and dryer, and a furnace and air conditioning system that are approximately 3 years old, ensuring efficiency and comfort in all seasons. Located in the family-friendly community of Redcliff, this home is ready to welcome its new owners. With its combination of space, comfort, and



modern updates, it truly is a perfect family home. Donâ€™t miss out on this exceptional opportunity! Schedule a viewing today!

Built in 1996

Essential Information

| | |
|----------------|-------------|
| MLS® # | A2199946 |
| Price | \$469,900 |
| Bedrooms | 5 |
| Bathrooms | 2.00 |
| Full Baths | 2 |
| Square Footage | 1,506 |
| Acres | 0.15 |
| Year Built | 1996 |
| Type | Residential |
| Sub-Type | Detached |
| Style | Bungalow |
| Status | Active |

Community Information

| | |
|-------------|--------------------|
| Address | 410 Stone Place Sw |
| Subdivision | NONE |
| City | Redcliff |
| County | Cypress County |
| Province | Alberta |
| Postal Code | T0J2P2 |

Amenities

| | |
|----------------|--|
| Parking Spaces | 4 |
| Parking | Double Garage Attached, Garage Door Opener, Heated Garage, Concrete Driveway |
| # of Garages | 2 |

Interior

| | |
|-------------------|---|
| Interior Features | Dry Bar, Kitchen Island, Pantry, Vinyl Windows, Walk-In Closet(s) |
| Appliances | Central Air Conditioner, Dishwasher, Dryer, Garage Control(s), Refrigerator, Stove(s), Washer |
| Heating | Forced Air, Natural Gas |

| | |
|--------------|----------------|
| Cooling | Central Air |
| Has Basement | Yes |
| Basement | Finished, Full |

Exterior

| | |
|-------------------|----------------------|
| Exterior Features | Private Yard |
| Lot Description | Back Lane, Back Yard |
| Roof | Asphalt Shingle |
| Construction | Vinyl Siding |
| Foundation | Poured Concrete |

Additional Information

| | |
|----------------|-----------------|
| Date Listed | March 7th, 2025 |
| Days on Market | 58 |
| Zoning | R1 |

Listing Details

| | |
|----------------|--------------------------|
| Listing Office | RIVER STREET REAL ESTATE |
|----------------|--------------------------|

Data is supplied by Pillar 9â„¢ MLS® System. Pillar 9â„¢ is the owner of the copyright in its MLS® System. Data is deemed reliable but is not guaranteed accurate by Pillar 9â„¢. The trademarks MLS®, Multiple Listing Service® and the associated logos are owned by The Canadian Real Estate Association (CREA) and identify the quality of services provided by real estate professionals who are members of CREA. Used under license.