

# \$1,600 - 302, 10101 101 Avenue, Grande Prairie

MLS® #A2208511

## \$1,600

2 Bedroom, 2.00 Bathroom, 825 sqft

Rental on 0.00 Acres

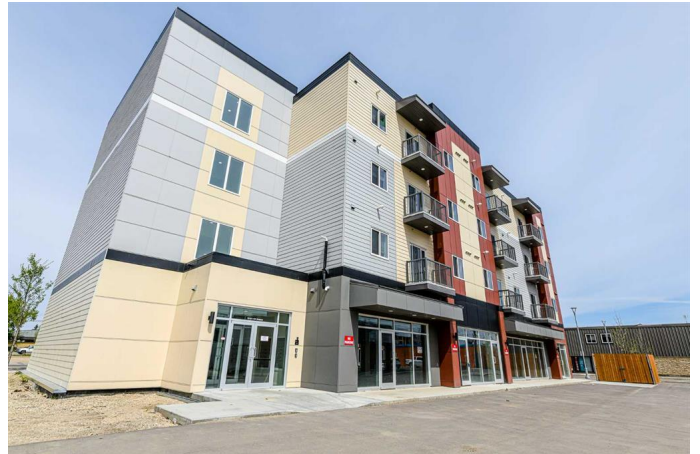
Central Business District., Grande Prairie, Alberta

2 bed 2 bath unit in Toremide Towers!  
In the heart of downtown and in close proximity to all amenities. The building has an elevator and is sound proofed. Spacious entry way with closet. Open kitchen with 5 stainless appliances and lots of cabinet and countertop space. Large living room with access to attached balcony separates the 2 bedrooms. Primary bedroom has 3 piece ensuite. Second bedroom has access to the 4 piece bathroom. In suite laundry and no baseboard heaters to take up floor space.  
Rent includes water. Powered parking stalls available at \$75/mo.  
Cat Friendly with approval and a \$50/mo pet fee.  
Application required prior to viewing.

## Essential Information

MLS® #	A2208511
Price	\$1,600
Bedrooms	2
Bathrooms	2.00
Full Baths	2
Square Footage	825
Acres	0.00
Type	Rental
Status	Active

## Community Information



Address	302, 10101 101 Avenue
Subdivision	Central Business District.
City	Grande Prairie
County	Grande Prairie
Province	Alberta
Postal Code	T8V0Y4

### **Amenities**

Parking	Stall
---------	-------

### **Interior**

Appliances	Dishwasher, Microwave Hood Fan, Oven, Refrigerator, Stove(s), Washer/Dryer
------------	--

### **Exterior**

Roof	Asphalt Shingle
------	-----------------

### **Additional Information**

Date Listed	April 3rd, 2025
-------------	-----------------

Days on Market	34
----------------	----

### **Listing Details**

Listing Office	Grassroots Realty Group Ltd.
----------------	------------------------------

Data is supplied by Pillar 9â„¢ MLS® System. Pillar 9â„¢ is the owner of the copyright in its MLS® System. Data is deemed reliable but is not guaranteed accurate by Pillar 9â„¢. The trademarks MLS®, Multiple Listing Service® and the associated logos are owned by The Canadian Real Estate Association (CREA) and identify the quality of services provided by real estate professionals who are members of CREA. Used under license.