

# \$99,999 - 5019, 25054 South Pine Lake Road, Rural Red Deer County

---

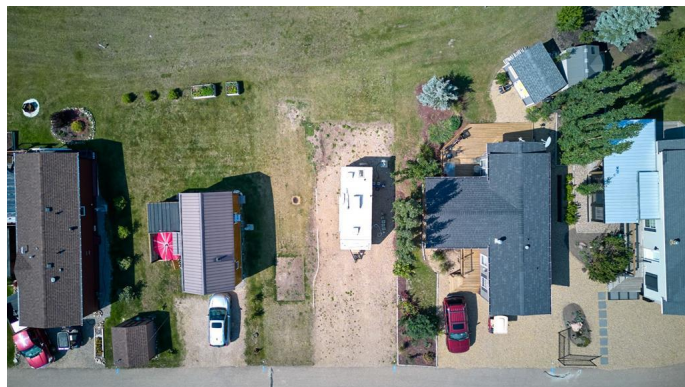
MLS® #A2210041

**\$99,999**

0 Bedroom, 0.00 Bathroom,  
Land on 0.10 Acres

NONE, Rural Red Deer County, Alberta

Seller will consider Financing with minimum 20% Down!! Here is your OPPONENT to own a fantastic lot at Whispering Pines Golf & Country Club Resort- a 175 acre GATED COMMUNITY . Park your RV, buy a park model home or build a cabin. Enjoy all the outdoor activities such as boating ,sea doing , water sports .. at Pine Lake as well as all the amenities The RESORT has to offer including 18 hole, golf course, restaurant, lounge and patio, driving range, playground, sports courts, laundry, facilities, putting green, event facility, indoor swimming, pool, and hot tub and exercise room. Enjoy winter activities, such as snowmobiling, ice fishing and skating! Only 20 minutes south east of Red Deer. Donâ€™t miss out on this fantastic opportunity and start enjoying LAKE life!



## Essential Information

MLS® #	A2210041
Price	\$99,999
Bathrooms	0.00
Acres	0.10
Type	Land
Sub-Type	Residential Land
Status	Active

## Community Information

Address	5019, 25054 South Pine Lake Road
Subdivision	NONE
City	Rural Red Deer County
County	Red Deer County
Province	Alberta
Postal Code	T0M 1R0

### **Amenities**

Amenities	Beach Access, Boating, Clubhouse, Fitness Center, Indoor Pool, Park, Playground, Storage, Visitor Parking, Golf Course, RV/Boat Storage
-----------	---

### **Additional Information**

Date Listed	April 9th, 2025
Days on Market	24
Zoning	R-7

### **Listing Details**

Listing Office	RE/MAX Real Estate (Central)
----------------	------------------------------

Data is supplied by Pillar 9â„¢ MLSÂ® System. Pillar 9â„¢ is the owner of the copyright in its MLSÂ® System. Data is deemed reliable but is not guaranteed accurate by Pillar 9â„¢. The trademarks MLSÂ®, Multiple Listing ServiceÂ® and the associated logos are owned by The Canadian Real Estate Association (CREA) and identify the quality of services provided by real estate professionals who are members of CREA. Used under license.