

# \$614,900 - 210 Saddlelake Terrace Ne, Calgary

MLS® #A2210612

**\$614,900**

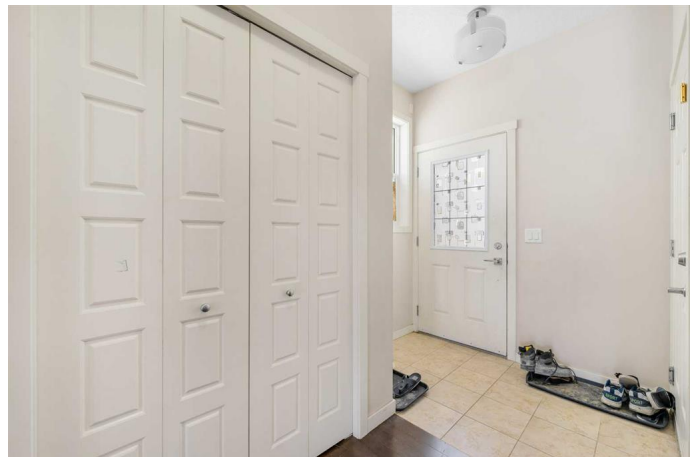
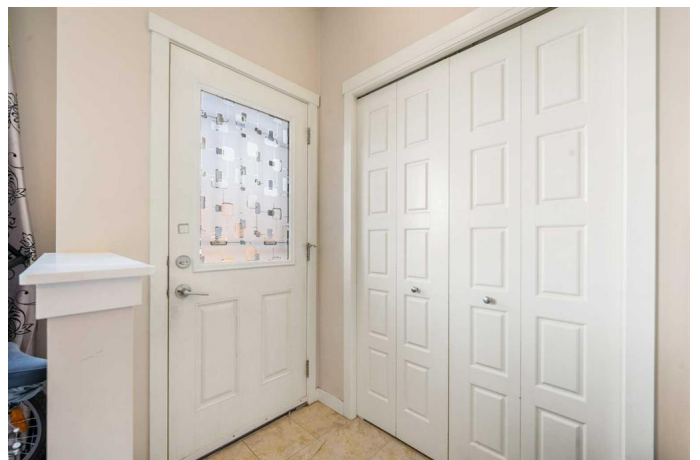
4 Bedroom, 4.00 Bathroom, 1,381 sqft

Residential on 0.06 Acres

Saddle Ridge, Calgary, Alberta

**\*\* LEGAL 1 Bedroom Basement Suite \*\***

Semi-Detached | 1,381 SqFt | Totaling 4 Bedrooms & 3.5 Bathrooms | Open Floor Plan | Kitchen Island | Stainless Steel Appliances | Full Height Cabinets | Granite Countertops | Pantry | Recessed Lighting | Great Natural Light | 3 Upper Level Bedrooms | Upper Level Laundry | Separate Entry to Legal Basement Suite | Great Open Floor Plan | Full Height Kitchen Cabinets | Stainless Steel Appliances | Sizeable Bedroom | 4pc Bath | Basement Laundry | Front Attached Single Garage | Driveway | Rear Double Car Concrete Parking Pad | Rear Lane. Welcome to a gorgeous 2-storey semi-detached home boasting 1,381 SqFt throughout the main and upper levels with an additional 589 SqFt in the legal 1 bedroom basement suite. The front door opens to a foyer with closet storage and views of the open floor plan main level. The open concept living makes this a great home for entertaining friends and family! The sizeable living room will easily fit a large sofa set providing you with a comfortable space to unwind. The kitchen is outfitted with granite countertops, stainless steel appliances, great cabinet storage and a pantry for dry goods. The centre island with barstool seating is the perfect space for small meals. The dining room is framed with a large window that overlooks the back yard. The rear mud room with closet storage leads to the back yard and parking pad. The main level is complete with a 2pc bath. Upstairs holds 3 bedrooms, 2 bathrooms



and laundry. The primary bedroom is paired with a walk-in closet and private 3pc ensuite. Bedrooms 2 & 3 are both a great size and share the 4pc bath with a tub/shower combo. The upper level stacked laundry is conveniently located near all the bedrooms. Downstairs, the legal 1 bedroom basement suite has a separate side entry and separate laundry making it a fully independent level. The basement has an open floor plan kitchen and rec room which provides space for both dining and living. The kitchen is finished with full height upper cabinets, stainless steel appliances and quartz countertops. The basement bedroom is sizeable and with an egress window, there's great natural light. The 4pc bath has a tub/shower combo and single vanity with storage below. This lower level has additional storage under the stairs for seasonal items. Outside, this home has a plethora of parking! The front single attached garage and driveway and in the rear is a concrete double car parking pad. The location can't be beat; a minutes walk to Hugh A Bennet CBE School, Saddleridge parks and playgrounds and walking paths. Hurry and book your showing at this incredible home today!

Built in 2015

### **Essential Information**

MLS® #	A2210612
Price	\$614,900
Bedrooms	4
Bathrooms	4.00
Full Baths	3
Half Baths	1
Square Footage	1,381
Acres	0.06
Year Built	2015

Type	Residential
Sub-Type	Semi Detached
Style	2 Storey, Side by Side
Status	Active

### Community Information

Address	210 Saddlelake Terrace Ne
Subdivision	Saddle Ridge
City	Calgary
County	Calgary
Province	Alberta
Postal Code	T3J 0V3

### Amenities

Parking Spaces	4
Parking	Alley Access, Driveway, Garage Faces Front, On Street, Parking Pad, Single Garage Attached, Additional Parking
# of Garages	1

### Interior

Interior Features	Granite Counters, High Ceilings, Kitchen Island, Laminate Counters, Open Floorplan, Pantry, Recessed Lighting, Separate Entrance, Walk-In Closet(s)
Appliances	Dishwasher, Dryer, Electric Stove, Garage Control(s), Microwave Hood Fan, Refrigerator, Washer
Heating	Forced Air
Cooling	None
Has Basement	Yes
Basement	Exterior Entry, Finished, Full, Suite

### Exterior

Exterior Features	Lighting, Rain Gutters
Lot Description	Back Lane, Back Yard, Interior Lot, Rectangular Lot, Street Lighting
Roof	Asphalt Shingle
Construction	Stone, Vinyl Siding, Wood Frame
Foundation	Poured Concrete

### Additional Information

Date Listed	April 30th, 2025
Zoning	R-2M

# Listing Details

Listing Office                RE/MAX Crown

Data is supplied by Pillar 9â„¢ MLS® System. Pillar 9â„¢ is the owner of the copyright in its MLS® System. Data is deemed reliable but is not guaranteed accurate by Pillar 9â„¢. The trademarks MLS®, Multiple Listing Service® and the associated logos are owned by The Canadian Real Estate Association (CREA) and identify the quality of services provided by real estate professionals who are members of CREA. Used under license.