

# \$259,000 - 110 Moberly Road, Grande Cache

MLS® #A2212831

## \$259,000

4 Bedroom, 4.00 Bathroom, 1,568 sqft

Residential on 0.28 Acres

NONE, Grande Cache, Alberta

Great home to live and supplement your mortgage. This home on its second floor boosts 2 good sized rooms, plus master suite, with walk-in closet and 3 piece bathroom. Main floor includes living room, half bath and a spacious kitchen that is ready for your culinary masterpieces! Upper floor's secondary 3 piece bathroom also includes washer and dryer. Supplement your mortgage with the suite in the basement, featuring in floor heating, separate entrance, 1 bedroom , 1 bathroom full kitchen and living space and a washer/dryer unit.

Built in 2005

## Essential Information

MLS® #	A2212831
Price	\$259,000
Bedrooms	4
Bathrooms	4.00
Full Baths	3
Half Baths	1
Square Footage	1,568
Acres	0.28
Year Built	2005
Type	Residential
Sub-Type	Semi Detached
Style	2 Storey, Side by Side
Status	Active



## Community Information

Address 110 Moberly Road  
Subdivision NONE  
City Grande Cache  
County Greenview No. 16, M.D. of  
Province Alberta  
Postal Code T0E 0Y0

## Amenities

Parking Spaces 3  
Parking Off Street

## Interior

Interior Features Walk-In Closet(s)  
Appliances Dishwasher, Dryer, Electric S  
Heating In Floor, Forced Air  
Cooling None  
Fireplace Yes  
# of Fireplaces 1  
Fireplaces Gas  
Has Basement Yes  
Basement Exterior Entry, Finished, Full,

## Exterior

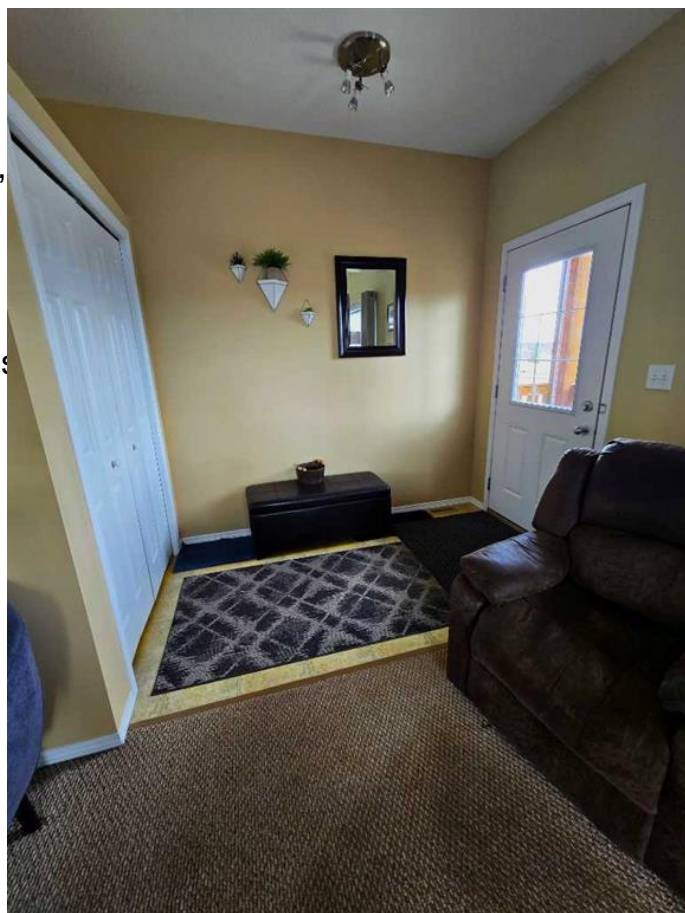
Exterior Features None  
Lot Description Back Yard, Few Trees, Lands  
Roof Asphalt Shingle  
Construction Vinyl Siding  
Foundation Poured Concrete

## Additional Information

Date Listed April 16th, 2025  
Days on Market 27  
Zoning RE

## Listing Details

Listing Office 2% Realty Edge AB



Data is supplied by Pillar 9â„¢ MLSÂ® System. Pillar 9â„¢ is the owner of the copyright in its MLSÂ® System. Data is deemed reliable but is not guaranteed accurate by Pillar 9â„¢. The trademarks MLSÂ®, Multiple Listing ServiceÂ® and the associated logos are owned by The Canadian Real Estate Association (CREA) and identify the quality of services

provided by real estate professionals who are members of CREA. Used under license.