

\$15 - 253, 27312 Township Road 394, Rural Lacombe County

MLS® #A2214853

\$15

0 Bedroom, 0.00 Bathroom,
Commercial on 0.00 Acres

Aspelund Industrial Park, Rural Lacombe
County, Alberta

This 9,340 SF space, located in Aspelund Industrial Park features a shared reception area, a staff room with kitchenette, and a washroom. The shop is wide-open with a shop office/storage and washroom, as well as (6) 14' x 16' overhead doors. Ample parking is available on site for staff and clients, with designated yard space behind the building. The property offers high visibility from Highway 2. This is a gross lease and utilities are included. Additional office space may be negotiable.

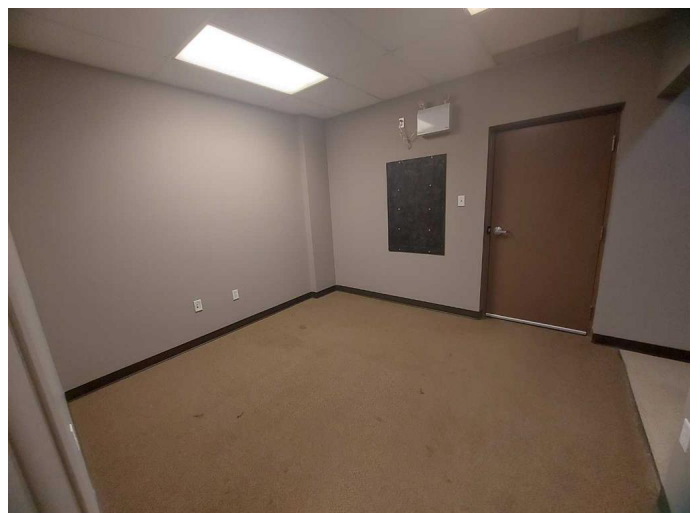
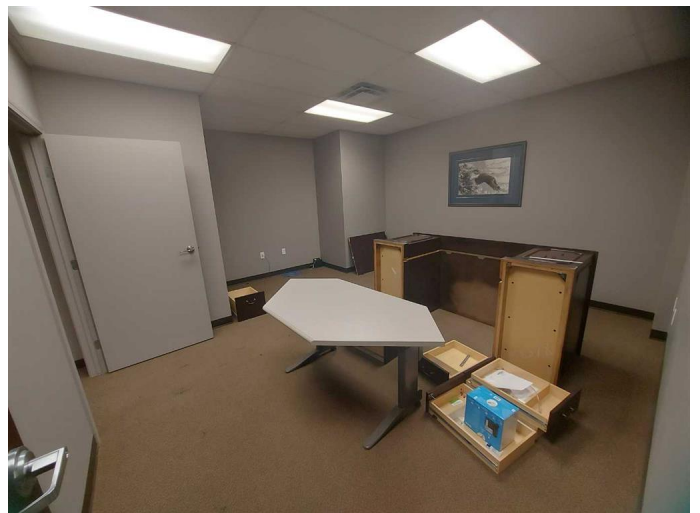
Built in 2009

Essential Information

MLS® #	A2214853
Price	\$15
Bathrooms	0.00
Acres	0.00
Year Built	2009
Type	Commercial
Sub-Type	Industrial
Status	Active

Community Information

Address	253, 27312 Township Road 394
Subdivision	Aspelund Industrial Park



City	Rural Lacombe County
County	Lacombe County
Province	Alberta
Postal Code	T4M 0R9

Additional Information

Date Listed	April 25th, 2025
Days on Market	6
Zoning	I-BI

Listing Details

Listing Office	RE/MAX Commercial Properties
----------------	------------------------------

Data is supplied by Pillar 9â„¸ MLSÂ© System. Pillar 9â„¸ is the owner of the copyright in its MLSÂ© System. Data is deemed reliable but is not guaranteed accurate by Pillar 9â„¸. The trademarks MLSÂ©, Multiple Listing ServiceÂ© and the associated logos are owned by The Canadian Real Estate Association (CREA) and identify the quality of services provided by real estate professionals who are members of CREA. Used under license.