

\$419,900 - 18 Van Slyke Way, Red Deer

MLS® #A2216070

\$419,900

3 Bedroom, 4.00 Bathroom, 1,337 sqft

Residential on 0.07 Acres

Vanier East, Red Deer, Alberta

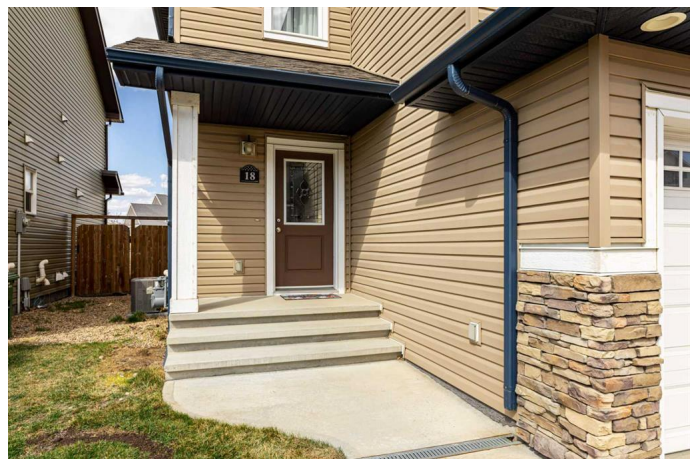
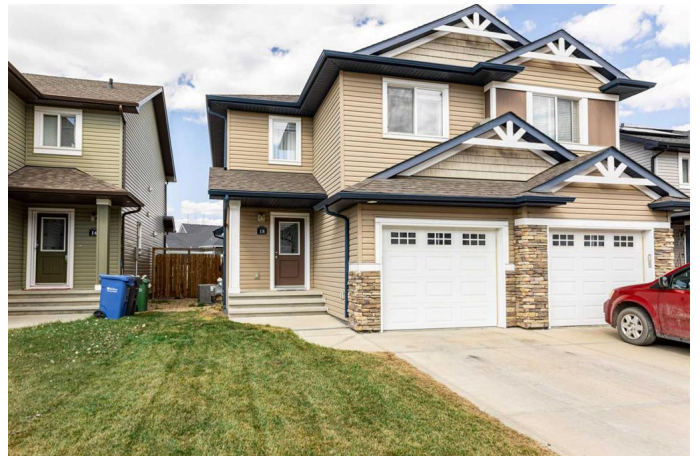
Welcome to 18 Van Slyke Way, a beautifully maintained two-storey half-duplex located in the desirable community of Vanier East. This fully developed home offers over 1,200 square feet of functional living space and is a perfect choice for first-time buyers, young families, or investors looking for a move-in-ready property in a quiet, family-friendly neighbourhood.

Step inside to a bright and open main floor with large windows and durable laminate flooring throughout. The kitchen features rich maple cabinetry, stainless steel appliances, granite countertops, a corner pantry, and a central island with an undermount sink and eating bar—ideal for casual meals and entertaining. A convenient half bath is located just off the entryway, perfect for guests.

Upstairs, you'll find three generously sized bedrooms, including a spacious primary suite with a walk-in closet and a private 3-piece ensuite featuring a walk-in shower. The upper level also includes a 4-piece bathroom to serve the additional bedrooms and a good sized laundry closet for added convenience.

The fully finished basement provides even more living space with a large recreation room and a 3-piece bathroom with shower that completes the lower level. Central air conditioning ensures year-round comfort.

Outside, the fully fenced backyard is



landscaped and perfect for outdoor living. Enjoy summer evenings on the back deck or gather around the fire pit with friends and family. There's no condo fee, and the home has great curb appeal with its covered front entry and modern design.

Located in Vanier East, this home backs onto a walking path and is steps away from parks, playgrounds, and open green spaces. The neighbourhood is known for its tranquil setting and easy access to amenities. Nearby you'll find grocery stores, restaurants, fitness facilities, and more. Families will appreciate the proximity to schools. With walking trails, community spaces, and more nearby, this location offers both convenience and lifestyle.

This is a fantastic opportunity to own a fully developed, move-in-ready home in a highly sought-after area. This is a fantastic opportunity to own a fully developed, move-in-ready home in a highly sought-after area!

Built in 2013

Essential Information

| | |
|----------------|------------------------|
| MLS® # | A2216070 |
| Price | \$419,900 |
| Bedrooms | 3 |
| Bathrooms | 4.00 |
| Full Baths | 3 |
| Half Baths | 1 |
| Square Footage | 1,337 |
| Acres | 0.07 |
| Year Built | 2013 |
| Type | Residential |
| Sub-Type | Semi Detached |
| Style | 2 Storey, Side by Side |

Status Active

Community Information

Address 18 Van Slyke Way
Subdivision Vanier East
City Red Deer
County Red Deer
Province Alberta
Postal Code T4R0N4

Amenities

Parking Spaces 3
Parking Off Street, Single Garage Attached, Concrete Driveway
of Garages 1

Interior

Interior Features Ceiling Fan(s), Granite Counters, Pantry, Vinyl Windows, Laminate Counters
Appliances Dishwasher, Microwave Hood Fan, Refrigerator, Washer/Dryer, Stove(s)
Heating Forced Air, Natural Gas
Cooling Central Air
Has Basement Yes
Basement Finished, Full

Exterior

Exterior Features Fire Pit, Private Yard
Lot Description Back Yard, Rectangular Lot, Backs on to Park/Green Space
Roof Asphalt Shingle
Construction Vinyl Siding, Wood Frame, Concrete
Foundation Poured Concrete

Additional Information

Date Listed April 29th, 2025
Days on Market 61
Zoning R1A

Listing Details

Listing Office Royal LePage Network Realty Corp.

Data is supplied by Pillar 9â„¢ MLS® System. Pillar 9â„¢ is the owner of the copyright in its MLS® System. Data is deemed reliable but is not guaranteed accurate by Pillar 9â„¢. The trademarks MLS®, Multiple Listing Service® and

the associated logos are owned by The Canadian Real Estate Association (CREA) and identify the quality of services provided by real estate professionals who are members of CREA. Used under license.