

\$500,000 - 1620 Shelbourne Street Sw, Calgary

MLS® #A2216890

\$500,000

0 Bedroom, 0.00 Bathroom,
Land on 0.10 Acres

Scarboro, Calgary, Alberta

"ATTENTION DEVELOPERS & BUILDERS!!

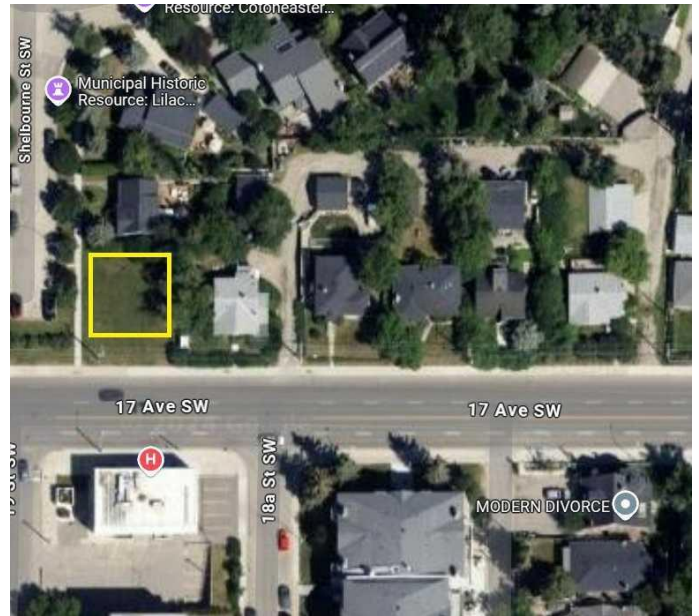
Prime corner lot in the highly sought-after inner-city community of Scarboro! This spacious lot, zoned RCG, is ideal for an infill project, with no demolition costs and immediate possession available. Measuring approximately 19.8 x 21.3 meters (corner cut), this location offers a rare opportunity to build a new home or multi-family unit just minutes from downtown Calgary. Enjoy the convenience of nearby amenities including top-rated schools, parks, shopping, dining, and excellent transit access. Don't miss out—motivated sellers make this upscale neighborhood your next project site!"

Essential Information

MLS® #	A2216890
Price	\$500,000
Bathrooms	0.00
Acres	0.10
Type	Land
Sub-Type	Residential Land
Status	Active

Community Information

Address	1620 Shelbourne Street Sw
Subdivision	Scarboro
City	Calgary
County	Calgary



Province	Alberta
Postal Code	T3C 2L3

Additional Information

Date Listed	May 1st, 2025
Days on Market	75
Zoning	R-CG

Listing Details

Listing Office	CIR Realty
----------------	------------

Data is supplied by Pillar 9â„¢ MLS® System. Pillar 9â„¢ is the owner of the copyright in its MLS® System. Data is deemed reliable but is not guaranteed accurate by Pillar 9â„¢. The trademarks MLS®, Multiple Listing Service® and the associated logos are owned by The Canadian Real Estate Association (CREA) and identify the quality of services provided by real estate professionals who are members of CREA. Used under license.