

# \$509,900 - 53 Coalbanks Link W, Lethbridge

MLS® #A2221259

**\$509,900**

5 Bedroom, 3.00 Bathroom, 1,084 sqft  
Residential on 0.11 Acres

Copperwood, Lethbridge, Alberta

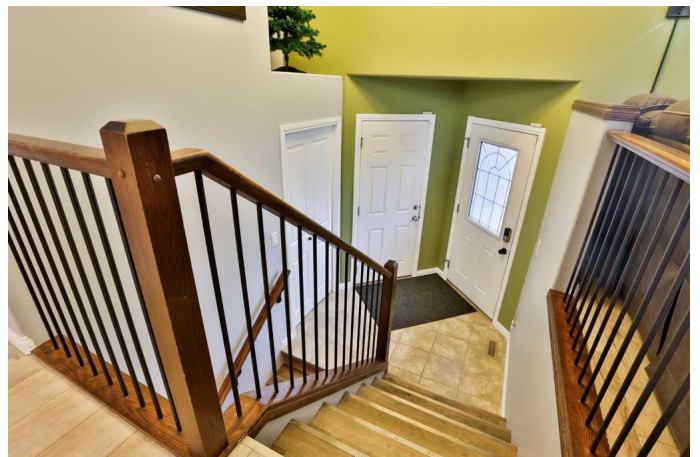
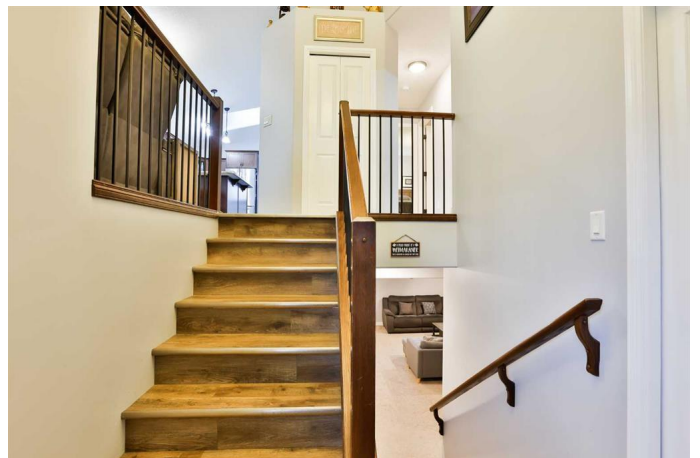
Welcome to this well-maintained, move-in ready home offering a total of 2,078 sq ft of fully developed living space. With 5 bedrooms—including 3 on the main floor—and 3 full bathrooms (2 upstairs including a private ensuite, and 1 downstairs), this home offers both space and flexibility for family living.

The open-concept main floor is bright and welcoming—perfect for entertaining and everyday comfort. The lower level features a spacious family room, ideal for movie nights, play space, or a home office setup, along with 2 additional bedrooms and a full bathroom.

Enjoy plenty of storage throughout, plus valuable updates including a new roof in 2023, newer flooring, and central A/C to keep you cool through the summer months. The attached double garage offers added convenience, and the fully fenced backyard with a maintenance-free deck is ready for BBQ season.

Located close to schools, shopping, the YMCA, and with quick access to Whoop Up Drive, this home makes commuting easy whether you're heading across the city or up toward Calgary.

Don't miss the photos and Virtual Tour—this one truly checks all the boxes!



Built in 2007

## Essential Information

|                |             |
|----------------|-------------|
| MLS® #         | A2221259    |
| Price          | \$509,900   |
| Bedrooms       | 5           |
| Bathrooms      | 3.00        |
| Full Baths     | 3           |
| Square Footage | 1,084       |
| Acres          | 0.11        |
| Year Built     | 2007        |
| Type           | Residential |
| Sub-Type       | Detached    |
| Style          | Bi-Level    |
| Status         | Active      |

## Community Information

|             |                     |
|-------------|---------------------|
| Address     | 53 Coalbanks Link W |
| Subdivision | Copperwood          |
| City        | Lethbridge          |
| County      | Lethbridge          |
| Province    | Alberta             |
| Postal Code | T1J 4R8             |

## Amenities

|                |                        |
|----------------|------------------------|
| Parking Spaces | 4                      |
| Parking        | Double Garage Attached |
| # of Garages   | 2                      |

## Interior

|                   |  |
|-------------------|--|
| Interior Features | Breakfast Bar, Granite Counters, Kitchen Island, Open Floorplan  |
| Appliances        | Central Air Conditioner, Dishwasher, Electric Stove, Garage Control(s), Range Hood, Refrigerator, Washer/Dryer, Window Coverings |
| Heating           | Forced Air   |
| Cooling           | Central Air  |
| Has Basement      | Yes  |
| Basement          | Finished, Full   |

## Exterior

|                   |                                  |
|-------------------|----------------------------------|
| Exterior Features | None                             |
| Lot Description   | Back Lane, Back Yard, Landscaped |
| Roof              | Asphalt Shingle                  |
| Construction      | Stone, Vinyl Siding, Wood Frame  |
| Foundation        | Poured Concrete                  |

### **Additional Information**

|                |                |
|----------------|----------------|
| Date Listed    | May 14th, 2025 |
| Days on Market | 10             |
| Zoning         | R-SL           |

### **Listing Details**

|                |                                 |
|----------------|---------------------------------|
| Listing Office | RE/MAX REAL ESTATE - LETHBRIDGE |
|----------------|---------------------------------|

Data is supplied by Pillar 9â„¢ MLS® System. Pillar 9â„¢ is the owner of the copyright in its MLS® System. Data is deemed reliable but is not guaranteed accurate by Pillar 9â„¢. The trademarks MLS®, Multiple Listing Service® and the associated logos are owned by The Canadian Real Estate Association (CREA) and identify the quality of services provided by real estate professionals who are members of CREA. Used under license.