

\$340,000 - 2422, 8 Bridlecrest Drive Sw, Calgary

MLS® #A2223522

\$340,000

2 Bedroom, 2.00 Bathroom, 832 sqft

Residential on 0.00 Acres

Bridlewood, Calgary, Alberta

This TOP FLOOR 2 bedroom, 2 bathroom unit offers over 830 sq ft of bright and functional living space, complete with ALL UTILITIES INCLUDED (electricity, heat, and water). Thoughtfully designed with comfort and convenience in mind, this home features in-suite laundry, an extra LARGE STORAGE LOCKER, titled UNDERGROUND PARKING, and a large WEST FACING BALCONY, perfect for soaking in the afternoon sun. Inside, the open layout includes a spacious living room, a rare full-sized dining area, and a well-appointed kitchen with New stainless steel appliances. The bedrooms and washrooms are ideally situated on opposite sides of the unit for enhanced privacy. The primary bedroom includes a walk-through closet leading to a private ensuite bathroom. Located just minutes from shopping, schools, parks, major roads, bus routes, and the Shawnessy LRT station, this property offers unbeatable access to everyday essentials. Don't miss your chance to own a top-floor unit in a well-maintained complex with incredible value. Book your showing today!

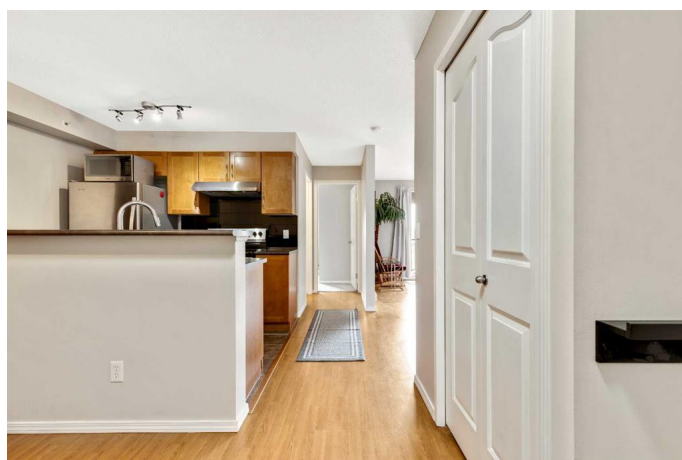
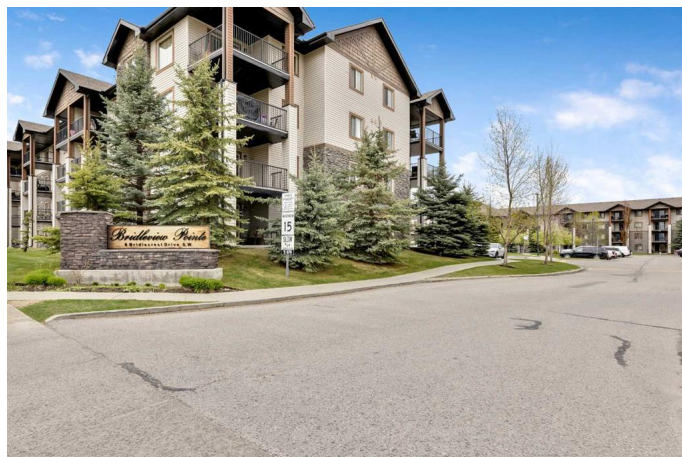
Built in 2008

Essential Information

MLS® # A2223522

Price \$340,000

Bedrooms 2



Bathrooms	2.00
Full Baths	2
Square Footage	832
Acres	0.00
Year Built	2008
Type	Residential
Sub-Type	Apartment
Style	Single Level Unit
Status	Active

Community Information

Address	2422, 8 Bridlecrest Drive Sw
Subdivision	Bridlewood
City	Calgary
County	Calgary
Province	Alberta
Postal Code	T2Y 0H7

Amenities

Amenities	Elevator(s), Park, Secured Parking, Snow Removal, Visitor Parking
Parking Spaces	1
Parking	Heated Garage, Parkade, Titled, Underground, Covered, Secured

Interior

Interior Features	Ceiling Fan(s), No Smoking Home
Appliances	Dishwasher, Dryer, Electric Stove, Microwave, Refrigerator, Washer
Heating	Baseboard
Cooling	Other
# of Stories	4

Exterior

Exterior Features	Balcony
Construction	Vinyl Siding, Wood Frame

Additional Information

Date Listed	May 22nd, 2025
Days on Market	15
Zoning	M-2

Listing Details

Listing Office

RE/MAX First

Data is supplied by Pillar 9â„¢ MLSÂ® System. Pillar 9â„¢ is the owner of the copyright in its MLSÂ® System. Data is deemed reliable but is not guaranteed accurate by Pillar 9â„¢. The trademarks MLSÂ®, Multiple Listing ServiceÂ® and the associated logos are owned by The Canadian Real Estate Association (CREA) and identify the quality of services provided by real estate professionals who are members of CREA. Used under license.