

\$685,000 - 358 West Creek Springs, Chestermere

MLS® #A2224244

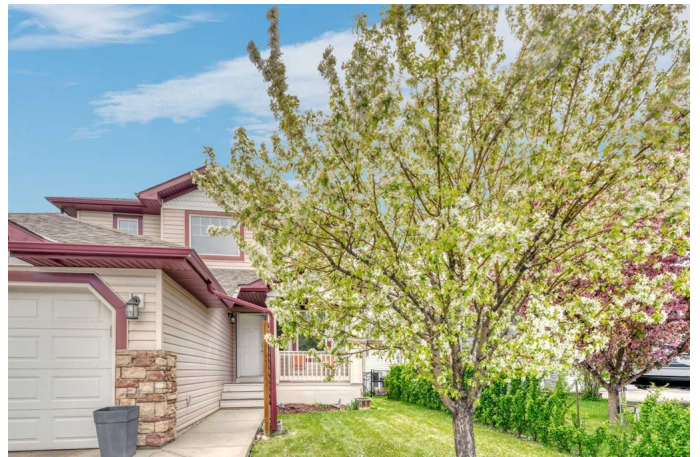
\$685,000

4 Bedroom, 4.00 Bathroom, 1,633 sqft

Residential on 0.13 Acres

West Creek, Chestermere, Alberta

This fully finished 2 story with walk out basement is perfectly located backing onto a lush, mature green space, park and creek in the established community of West Creek. This charming home has great curb appeal with welcoming landscaping and a cozy and private covered front porch. You can have the best of both worlds with an open concept main living space plus a bright and open front flex room to use as a second living space, dining room or whatever suits your needs. There is room for everyone and this layout lends itself well to entertaining for a large family. The sunny kitchen is finished in popular white cabinetry & backsplash for a neutral finish that allows you to make it your own. A raised breakfast bar provides extra seating and the kitchen flows seamlessly into the breakfast nook and living room. Durable vinyl plank flooring throughout provides a fresh clean and modern look. A 3 pc bath off of the garage rounds out this main level. Upstairs youâ€™ll find 3 nice sized bedrooms including the primary with 4 pc ensuite bath and walk in closet. Each of the other 2 bedrooms have their own walk in closet with a 2 pc bath Jack & Jill bath in between. Youâ€™re going to love the convenience of upstairs laundry. The fully finished walk out level with brand new carpet expands your living space for both entertaining and everyday family life. A large recreation space leads directly to the backyard. There is a 4th bedroom as well as a 3 pc bath making this the perfect space for your teenager,



another family member or guests to enjoy. Get ready to embrace summer in this beautiful West facing backyard. Lush landscaping includes mature trees and cultivated garden areas. The gathering of trees in the green space directly behind you offer both privacy and beauty to you to enjoy without having to maintain. Youâ€™ll also enjoy direct access to the playground behind you as well as some of Chestermereâ€™s most beautiful pathways. Living in West Creek means you are close to schools, parks, pathways and a growing number of terrific local businesses all within an easy commute to Calgary for work or play. You are going to love living here.

Built in 2004

Essential Information

MLS® #	A2224244
Price	\$685,000
Bedrooms	4
Bathrooms	4.00
Full Baths	4
Square Footage	1,633
Acres	0.13
Year Built	2004
Type	Residential
Sub-Type	Detached
Style	2 Storey
Status	Active

Community Information

Address	358 West Creek Springs
Subdivision	West Creek
City	Chestermere
County	Chestermere
Province	Alberta
Postal Code	T1X 1R7

Amenities

Parking Spaces	4
Parking	Double Garage Attached
# of Garages	2

Interior

Interior Features	Ceiling Fan(s), Closet Organizers, Kitchen Island, No Smoking Home, Pantry, Storage, Vinyl Windows, Walk-In Closet(s)
Appliances	Dishwasher, Dryer, Electric Stove, Garage Control(s), Refrigerator, Washer, Window Coverings
Heating	Forced Air, Natural Gas
Cooling	None
Fireplace	Yes
# of Fireplaces	1
Fireplaces	Gas
Has Basement	Yes
Basement	Finished, Full, Walk-Out

Exterior

Exterior Features	Private Yard, Rain Gutters
Lot Description	Back Yard, Backs on to Park/Green Space, Cul-De-Sac, Front Yard, Fruit Trees/Shrub(s), Landscaped, Lawn, Low Maintenance Landscape, No Neighbours Behind, Rectangular Lot
Roof	Asphalt Shingle
Construction	Vinyl Siding
Foundation	Poured Concrete

Additional Information

Date Listed	May 26th, 2025
Days on Market	12
Zoning	R1

Listing Details

Listing Office	RE/MAX Key
----------------	------------

Data is supplied by Pillar 9â„¢ MLSÂ® System. Pillar 9â„¢ is the owner of the copyright in its MLSÂ® System. Data is deemed reliable but is not guaranteed accurate by Pillar 9â„¢. The trademarks MLSÂ®, Multiple Listing ServiceÂ® and the associated logos are owned by The Canadian Real Estate Association (CREA) and identify the quality of services provided by real estate professionals who are members of CREA. Used under license.