

# \$799,900 - 565041 Range Road 104, Rural Woodlands County

---

MLS® #A2224724

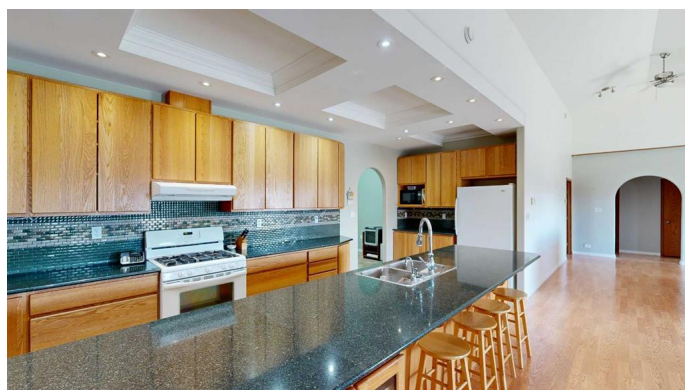
**\$799,900**

0 Bedroom, 0.00 Bathroom, 3,084 sqft  
Agri-Business on 159.01 Acres

NONE, Rural Woodlands County, Alberta

Welcome to this 2006 ranch-style home nestled on 159.01 acres of serene countryside between Whitecourt and Mayerthorpe, just southwest of Anselmo Hall and only a short distance off the pavement. This spacious 5-bedroom, 3-bathroom home offers over 3,000 sq ft of living space with vaulted ceilings and generously sized bedrooms, perfect for a growing family or hosting guests. Enjoy your morning coffee or summer BBQs on the large covered deck, complete with a natural gas hookup. The property includes both an attached and a detached garage—plenty of space for vehicles, tools, and toys. Formerly a thriving U-pick operation, the land offers incredible potential for someone looking to revive the business or simply enjoy the beauty and bounty of rural life. With peaceful surroundings and a stunning view, this property is a true gem waiting for its next chapter.

Built in 2006



## Essential Information

MLS® #	A2224724
Price	\$799,900
Bathrooms	0.00
Square Footage	3,084
Acres	159.01

Year Built	2006
Type	Agri-Business
Sub-Type	Agriculture
Style	Bungalow
Status	Active

### Community Information

Address	565041 Range Road 104
Subdivision	NONE
City	Rural Woodlands County
County	Woodlands County
Province	Alberta
Postal Code	T0E 1N0

### Amenities

Parking	Double Garage Attached
# of Garages	2

### Interior

Interior Features	Vaulted Ceiling(s)
Appliances	Dishwasher, Freezer, Gas Stove, Refrigerator, Washer/Dryer, Window Coverings
Heating	In Floor, Natural Gas, Sep. HVAC Units
Basement	None

### Exterior

Exterior Features	BBQ gas line, Garden, Private Yard
Roof	Metal
Construction	ICFs (Insulated Concrete Forms)
Foundation	ICF Block, Slab

### Additional Information

Date Listed	May 26th, 2025
Days on Market	12
Zoning	Agricultural

### Listing Details

Listing Office	RE/MAX ADVANTAGE (WHITECOURT)
----------------	-------------------------------

Data is supplied by Pillar 9â„¢ MLS® System. Pillar 9â„¢ is the owner of the copyright in its MLS® System. Data is deemed reliable but is not guaranteed accurate by Pillar 9â„¢. The trademarks MLS®, Multiple Listing Service® and

the associated logos are owned by The Canadian Real Estate Association (CREA) and identify the quality of services provided by real estate professionals who are members of CREA. Used under license.