

\$664,900 - 48 Scenic Way Nw, Calgary

MLS® #A2231871

\$664,900

4 Bedroom, 3.00 Bathroom, 1,766 sqft

Residential on 0.11 Acres

Scenic Acres, Calgary, Alberta

Great LOCATION, Great SPACE, Walking distance to the LRT. South-facing, beautiful backyard. This spacious 1766 sqft-plus living space home with 3 BEDRMS, 2 FULL & 1 HALF bath, main bedrm with a walk-in closet. Relax, also, in the Family Room with its BUILT IN WALL UNIT & Wood Burning fireplace with brick surround. The lower floor has a laundry. Finished basement with 4th bedroom. DON'T MISS OUT!!

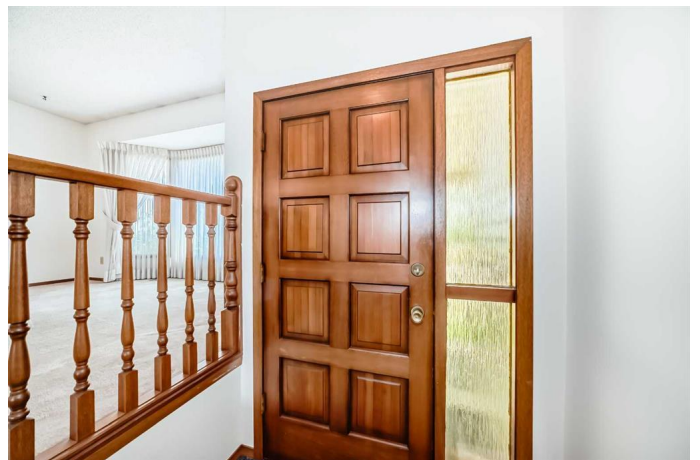
Built in 1981

Essential Information

MLS® #	A2231871
Price	\$664,900
Bedrooms	4
Bathrooms	3.00
Full Baths	2
Half Baths	1
Square Footage	1,766
Acres	0.11
Year Built	1981
Type	Residential
Sub-Type	Detached
Style	2 Storey Split
Status	Active

Community Information

Address 48 Scenic Way Nw



Subdivision	Scenic Acres
City	Calgary
County	Calgary
Province	Alberta
Postal Code	T3L 1B7

Amenities

Parking Spaces	2
Parking	Double Garage Attached
# of Garages	2

Interior

Interior Features	No Animal Home
Appliances	Dishwasher, Garage Control(s), Microwave, Refrigerator, Stove(s), Window Coverings
Heating	Forced Air, Natural Gas
Cooling	None
Fireplace	Yes
# of Fireplaces	1
Fireplaces	Wood Burning
Has Basement	Yes
Basement	Finished, Full

Exterior

Exterior Features	Garden, Private Yard
Lot Description	Back Lane, Back Yard, Garden, Level
Roof	Asphalt Shingle
Construction	Vinyl Siding, Wood Frame
Foundation	Poured Concrete

Additional Information

Date Listed	June 18th, 2025
Days on Market	2
Zoning	R-CG

Listing Details

Listing Office	Seller Direct Real Estate
----------------	---------------------------

Data is supplied by Pillar 9â„¢ MLSÂ® System. Pillar 9â„¢ is the owner of the copyright in its MLSÂ® System. Data is deemed reliable but is not guaranteed accurate by Pillar 9â„¢. The trademarks MLSÂ®, Multiple Listing ServiceÂ® and the associated logos are owned by The Canadian Real Estate Association (CREA) and identify the quality of services

