

# \$321,900 - 109, 6000 Somervale Court Sw, Calgary

MLS® #A2238621

**\$321,900**

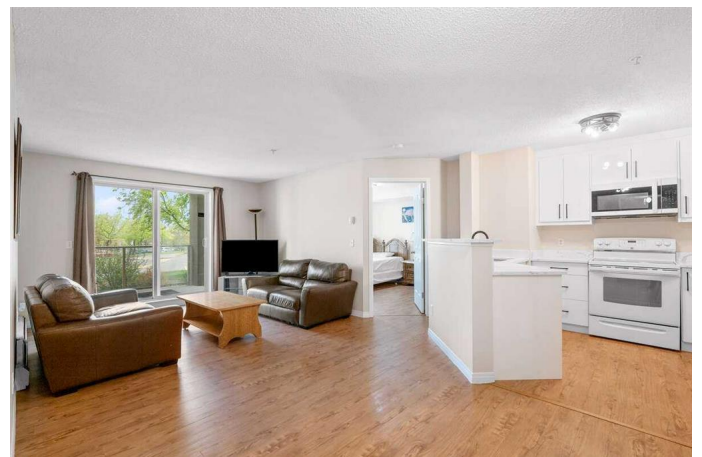
2 Bedroom, 2.00 Bathroom, 835 sqft  
Residential on 0.00 Acres

Somerset, Calgary, Alberta

For more information, please click the "More Information" button.

ALL UTILITIES INCLUDED IN CONDO FEES  
| 2 PARKINGS INCLUDING 1 HEATED  
UNDERGROUND & 1 OUTSIDE STALL | 2  
MINTUES WALK to SOMERSET LRT

STATION. Beautiful large, NEWLY  
RENOVATED, 2 bedrooms, 2 full bathrooms,  
Non-Smoking, No Pets, MAIN FLOOR condo  
located close to building entrance for easy  
access, BRAND-NEW KITCHEN and  
upgraded bathroom vanities with QUARTZ  
COUNERTOPS, LUXURY VINYL PLANKS  
flooring throughout the condo. PANTRY /  
STORAGE ROOM AND IN-SUITE LAUDRY.  
ALL FURNITURE INCLUDED. OPEN  
CONCEPT floor plan with bedrooms on the  
opposite side of the unit for added privacy,  
Master bedroom with walk-in closet and  
ensuite full bathroom, Guest bedroom with  
adjacent full bathroom. This condo is located  
in very quiet building of highly desirable Condo  
Complex of Somervale Court in the quiet  
community of Somerset in South Calgary Patio  
overlooks green space and landscaping with  
trees and is very private. Landscaped open  
area in front of the building. Close to transit  
(LRT & Bus), YMCA, Library, Multiplex cinema  
and host of shopping within a 2 KM radius  
(Walmart, Superstore, Co-op, Safeway, Home  
Depot, Canadian Tire, Future Shop, Staples,  
Tim Hortons, Starbucks, Banks (RBC, CIBC,  
TD, BMO), walk to Bishop O'Byrne Catholic  
High School, South Calgary Health Center.



Everything you need is only moments away. Downtown is easily accessible via the C-train or MacLeod or Deerfoot Trails. Nearby Plaza includes medical facilities such as South Calgary Urgent Care and walk in clinic, dental clinic and much more. Immediate East of Somerset is Fish Creek Park with its extensive cycling paths and to the South is the Stoney Trail with quick access West to the mountains and Banff National Park. One of a kind!

Built in 2001

### **Essential Information**

MLS® #	A2238621
Price	\$321,900
Bedrooms	2
Bathrooms	2.00
Full Baths	2
Square Footage	835
Acres	0.00
Year Built	2001
Type	Residential
Sub-Type	Apartment
Style	Single Level Unit
Status	Active

### **Community Information**

Address	109, 6000 Somervale Court Sw
Subdivision	Somerset
City	Calgary
County	Calgary
Province	Alberta
Postal Code	T2Y 4J4

### **Amenities**

Amenities	Elevator(s), Parking, Other, Snow Removal
Parking Spaces	2
Parking	Stall, Underground

## Interior

Interior Features	Kitchen Island, No Animal Home, No Smoking Home, Open Floorplan, Vinyl Windows, Elevator
Appliances	Dishwasher, Electric Range, Garage Control(s), Refrigerator, Washer/Dryer Stacked, Window Coverings
Heating	Baseboard
Cooling	None
# of Stories	4
Basement	None

## Exterior

Exterior Features	Lighting
Roof	Asphalt Shingle
Construction	Stucco, Vinyl Siding
Foundation	Poured Concrete

## Additional Information

Date Listed	July 9th, 2025
Days on Market	102
Zoning	M-C2

## Listing Details

Listing Office	Easy List Realty
----------------	------------------

Data is supplied by Pillar 9â„¸ MLSÂ® System. Pillar 9â„¸ is the owner of the copyright in its MLSÂ® System. Data is deemed reliable but is not guaranteed accurate by Pillar 9â„¸. The trademarks MLSÂ®, Multiple Listing ServiceÂ® and the associated logos are owned by The Canadian Real Estate Association (CREA) and identify the quality of services provided by real estate professionals who are members of CREA. Used under license.