

\$1,975,000 - 1021 Rundlevview Drive, Canmore

MLS® #A2244517

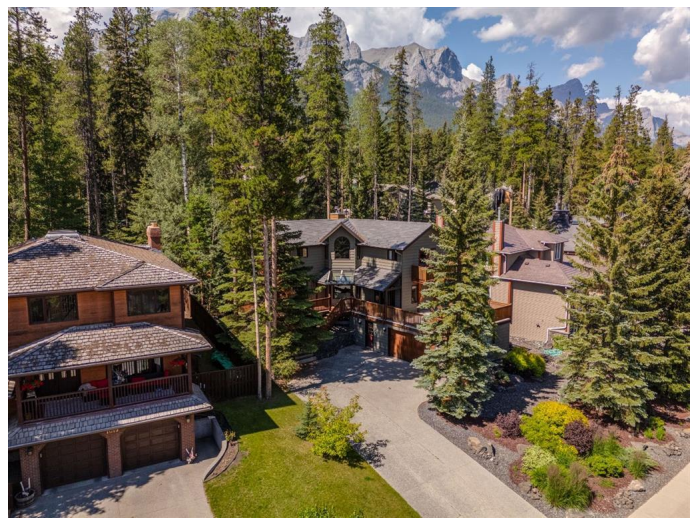
\$1,975,000

4 Bedroom, 3.00 Bathroom, 1,906 sqft

Residential on 0.16 Acres

Rundlevview Ests, Canmore, Alberta

Timeless mountain living in the heart of Rundlevview Estates. Rarely offered and highly sought-after, this 4-bedroom, 3-bathroom residence is set on a 0.16-acre lot in the prestigious Rundlevview Estatesâ€™ widely regarded as one of Canmoreâ€™s most exclusive and desirable neighbourhoods. Backing onto protected green space with beautiful mountain views, the home offers nearly 3,000 sq. ft. of thoughtfully designed living space across three levels. The main level features expansive windows that bring in abundant natural light, an open-concept layout ideal for entertaining and everyday living, and a dramatic two-storey stone-surround wood-burning fireplace that anchors the heart of the home. The chefâ€™s kitchen connects seamlessly to dining and living areas, while a main-floor guest bedroom offers convenience and privacy for visitors. Upstairs, the spacious primary suite includes a private deckâ€™perfect for enjoying morning coffee with a viewâ€™alongside a second bedroom, ideal for family or guests. The lower level offers a generous family room, an additional bedroom, and a charming enclave designed for built-in bunk bedsâ€™perfect for kids, grandkids, or overflow guests. Surrounding the home are multiple decks that invite year-round enjoyment of the outdoors and allow you to follow the sun from sunrise to sunset. A private backyard sanctuary features mature trees and a hot tubâ€™ideal for relaxing after a day of adventure. An oversized two-car garage



provides ample room for vehicles, gear, and storageâ€”an essential for life in the Rockies. Whether itâ€™s hiking in summer, skiing in winter, or simply soaking in the views, this home offers an unparalleled four-season lifestyle. With unmatched proximity to Quarry Lake, the Nordic Centre, and downtown Canmore, this property combines natural beauty, luxury, and location. Opportunities to own in Rundlevue Estates are exceptionally rareâ€”this is mountain living at its finest.

Built in 1989

Essential Information

MLS® #	A2244517
Price	\$1,975,000
Bedrooms	4
Bathrooms	3.00
Full Baths	3
Square Footage	1,906
Acres	0.16
Year Built	1989
Type	Residential
Sub-Type	Detached
Style	2 Storey
Status	Active

Community Information

Address	1021 Rundlevue Drive
Subdivision	Rundlevue Ests
City	Canmore
County	Bighorn No. 8, M.D. of
Province	Alberta
Postal Code	T1W 2P5

Amenities

Parking Spaces	4
Parking	Double Garage Attached
# of Garages	2

Interior

Interior Features	Beamed Ceilings, Chandelier, High Ceilings, Natural Woodwork, Open Floorplan, See Remarks, Vaulted Ceiling(s), Skylight(s)
Appliances	Dishwasher, Garage Control(s), Gas Range, Refrigerator, Washer/Dryer
Heating	Forced Air, Natural Gas
Cooling	None
Fireplace	Yes
# of Fireplaces	2
Fireplaces	Gas, Living Room, Wood Burning, Family Room
Has Basement	Yes
Basement	Exterior Entry, Finished, Full, Walk-Out

Exterior

Exterior Features	Other, Private Yard
Lot Description	Back Yard, Landscaped, Many Trees, See Remarks
Roof	Shake, Wood
Construction	Stone, Wood Frame, Wood Siding
Foundation	Poured Concrete

Additional Information

Date Listed	August 17th, 2025
Days on Market	1
Zoning	R1

Listing Details

Listing Office	Sotheby's International Realty Canada
----------------	---------------------------------------

Data is supplied by Pillar 9â„¢ MLS® System. Pillar 9â„¢ is the owner of the copyright in its MLS® System. Data is deemed reliable but is not guaranteed accurate by Pillar 9â„¢. The trademarks MLS®, Multiple Listing Service® and the associated logos are owned by The Canadian Real Estate Association (CREA) and identify the quality of services provided by real estate professionals who are members of CREA. Used under license.