

\$89,000 - 410 11355 640 Township, Lac La Biche County

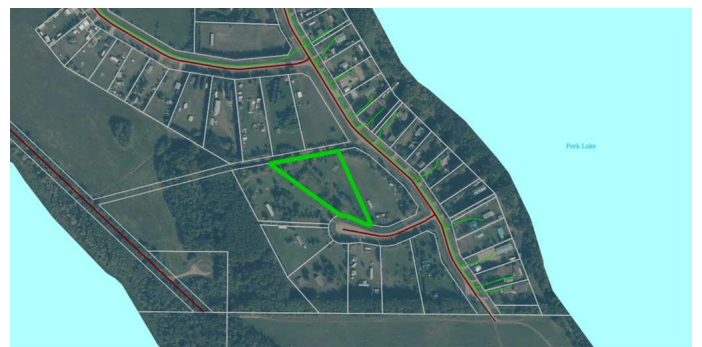
MLS® #A2244541

\$89,000

0 Bedroom, 0.00 Bathroom,
Land on 1.97 Acres

NONE, Lac La Biche County, Alberta

Located just minutes from the boat launch, this 2.27-acre lot in Fork Lake Subdivision is ready for development. Whether you're planning a lake-area cabin, a year-round residence, or a seasonal RV site, this property offers the flexibility you won't find elsewhere. No subdivision building restrictions means you design what suits your lifestyle. Subdivision is serviced by power and natural gas. Enjoy quiet surroundings, recreational access, and plenty of room to grow.



Essential Information

MLS® #	A2244541
Price	\$89,000
Bathrooms	0.00
Acres	1.97
Type	Land
Sub-Type	Residential Land
Status	Active

Community Information

Address	410 11355 640 Township
Subdivision	NONE
City	Lac La Biche County
County	Lac La Biche County
Province	Alberta
Postal Code	T0A2C2

Additional Information

Date Listed July 30th, 2025
Days on Market 20
Zoning residential

Listing Details

Listing Office RE/MAX LA BICHE REALTY

Data is supplied by Pillar 9â„¸ MLSÂ® System. Pillar 9â„¸ is the owner of the copyright in its MLSÂ® System. Data is deemed reliable but is not guaranteed accurate by Pillar 9â„¸. The trademarks MLSÂ®, Multiple Listing ServiceÂ® and the associated logos are owned by The Canadian Real Estate Association (CREA) and identify the quality of services provided by real estate professionals who are members of CREA. Used under license.