

# \$2,500 - 9823 80 Avenue, Grande Prairie

MLS® #A2249588

**\$2,500**

5 Bedroom, 3.00 Bathroom, 1,283 sqft

Rental on 0.00 Acres

Patterson Place., Grande Prairie, Alberta

Available Immediately! 5 Bedroom 2.5 Bathrooms in Patterson Place, Main Floor Laundry, Fully Developed Basement, Double Car Garage, Fully landscaped and fenced backyard. Tenant pays all utilities. Damage Deposit one months rent. Some pets will be allowed for an additional pet fee of \$75 per pet

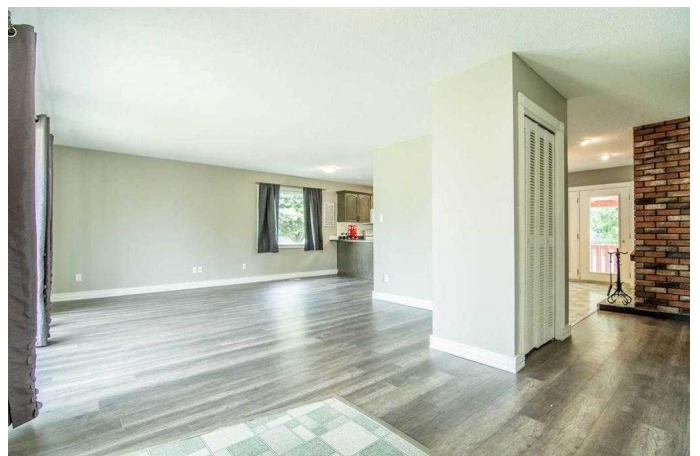
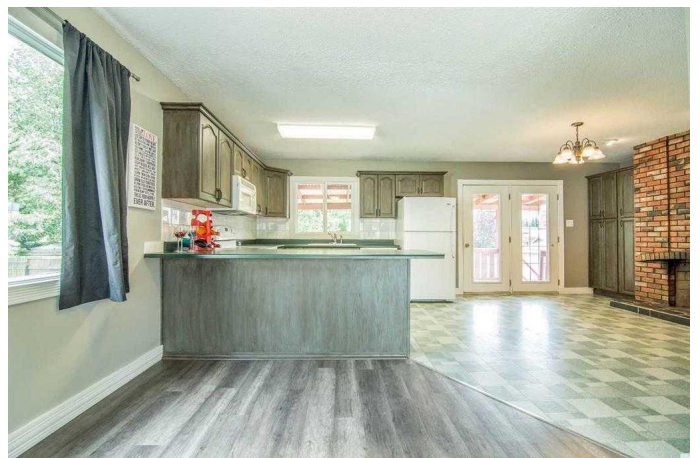
Built in 1974

## Essential Information

MLS® #	A2249588
Price	\$2,500
Bedrooms	5
Bathrooms	3.00
Full Baths	2
Half Baths	1
Square Footage	1,283
Acres	0.00
Year Built	1974
Type	Rental
Status	Active

## Community Information

Address	9823 80 Avenue
Subdivision	Patterson Place.
City	Grande Prairie
County	Grande Prairie
Province	Alberta
Postal Code	T8V 3S5



## Amenities

Parking	Double Garage Attached
---------	------------------------

## Interior

Appliances	Dishwasher, Electric Stove, Microwave, Refrigerator, Washer/Dryer
Fireplace	Yes
# of Fireplaces	1
Fireplaces	Brick Facing
Has Basement	Yes
Basement	Finished

## Exterior

Lot Description	Back Yard, Front Yard, Landscaped, No Neighbours Behind
Roof	Asphalt Shingle
Foundation	Poured Concrete

## Additional Information

Date Listed	August 18th, 2025
Days on Market	1

## Listing Details

Listing Office	RE/MAX Grande Prairie
----------------	-----------------------

Data is supplied by Pillar 9â„¢ MLS® System. Pillar 9â„¢ is the owner of the copyright in its MLS® System. Data is deemed reliable but is not guaranteed accurate by Pillar 9â„¢. The trademarks MLS®, Multiple Listing Service® and the associated logos are owned by The Canadian Real Estate Association (CREA) and identify the quality of services provided by real estate professionals who are members of CREA. Used under license.