

\$699,900 - 720 Poplar Drive, Rural St. Paul No. 19, County of

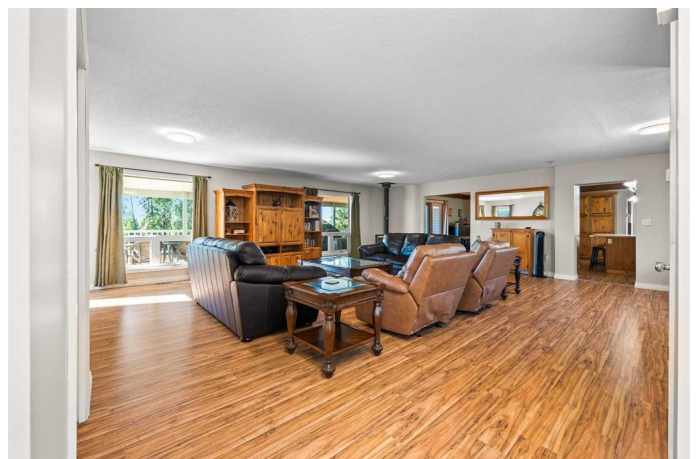
MLS® #A2249614

\$699,900

4 Bedroom, 3.00 Bathroom, 2,760 sqft
Residential on 0.79 Acres

Lawra Estates, Rural St. Paul No. 19, County of, Alberta

Absolutely stunning lake house in the sought-after community of Waterton Beach at Laurier Lake. This exceptional property offers nearly an acre of gated privacy, blending comfort, function, and breathtaking surroundings. From the moment you arrive, you will appreciate the extensive exterior landscaping that highlights the natural beauty of the lot, while recent upgrades such as a new septic field provide long-term value. A private water well further enhances year-round convenience. The double attached garage offers plenty of room for vehicles and storage, and it leads directly into the lower level of the home. This basement area is a cozy retreat featuring a rumpus room with a wood-burning stove, perfect for cooler evenings, as well as a bathroom, making it functional for guests or family gatherings. On the main level, you will find the heart of the home and a true entertainment hub. The expansive kitchen offers ample cabinetry and generous counter space, designed for easy meal prep while staying connected with family and friends. Two versatile rooms can serve as bedrooms, offices, or hobby spaces, while the massive living area is ideal for hosting and relaxing. Natural light fills the room, drawing you toward the lake-facing deck with panoramic views of Martha's Bay and the north side of Laurier Lake, the perfect spot for morning coffee or



evening sunsets. The yard has been thoughtfully designed to be low maintenance, giving you more time to enjoy the lake. A fire pit provides a welcoming gathering space, and two storage sheds offer extra room for tools, equipment, or recreational gear. Upstairs, the home continues to impress with two additional rooms off the hallway and a truly stunning vaulted master suite. This oversized retreat features soaring ceilings, abundant storage, and a sense of space and luxury that makes it the perfect place to unwind. The location itself only adds to the property's appeal, with Laurier Lake bordering Whitney Lakes Provincial Park, offering endless recreational opportunities in every season. From boating, fishing, and swimming in the summer to ice fishing, snowshoeing, and winter adventures, this is a true four-season destination. Whether you are seeking a year-round residence or a seasonal getaway, this property delivers the rare combination of space, privacy, and access to nature in one of the area's most desirable communities. With nearly an acre of landscaped land, gated security, a double attached garage, multiple living spaces, two sheds, a fire pit, and unmatched views of the lake, this is lakeside living at its finest. Don't miss your chance to make this Laurier Lake retreat your own.

Built in 1960

Essential Information

MLS® #	A2249614
Price	\$699,900
Bedrooms	4
Bathrooms	3.00
Full Baths	3
Square Footage	2,760
Acres	0.79
Year Built	1960

Type	Residential
Sub-Type	Detached
Style	1 and Half Storey, Acreage with Residence
Status	Active

Community Information

Address	720 Poplar Drive
Subdivision	Lawra Estates
City	Rural St. Paul No. 19, County of
County	St. Paul No. 19, County of
Province	Alberta
Postal Code	T0A 1A0

Amenities

Parking	Double Garage Attached
# of Garages	2
Is Waterfront	Yes

Interior

Interior Features	Ceiling Fan(s)
Appliances	Dryer, Electric Stove, Refrigerator, Washer
Heating	Forced Air
Cooling	Central Air
Fireplace	Yes
# of Fireplaces	1
Fireplaces	Wood Burning Stove
Has Basement	Yes
Basement	Finished, Full, Walk-Out

Exterior

Exterior Features	Balcony, Private Yard
Lot Description	Environmental Reserve, Landscaped, Low Maintenance Landscape, No Neighbours Behind, Private, Irregular Lot, Lake, Treed, Waterfront
Roof	Metal
Construction	Wood Frame
Foundation	Poured Concrete

Additional Information

Date Listed	August 21st, 2025
-------------	-------------------

Days on Market	1
Zoning	(CR1) County Residential

Listing Details

Listing Office	RE/MAX PRAIRIE REALTY
----------------	-----------------------

Data is supplied by Pillar 9â„¢ MLS® System. Pillar 9â„¢ is the owner of the copyright in its MLS® System. Data is deemed reliable but is not guaranteed accurate by Pillar 9â„¢. The trademarks MLS®, Multiple Listing Service® and the associated logos are owned by The Canadian Real Estate Association (CREA) and identify the quality of services provided by real estate professionals who are members of CREA. Used under license.