

\$635,000 - 35 Castlefall Grove Ne, Calgary

MLS® #A2251038

\$635,000

4 Bedroom, 3.00 Bathroom, 1,361 sqft

Residential on 0.13 Acres

Castleridge, Calgary, Alberta

****OPEN HOUSE SUN AUG 31 1:30-4:30PM****

FULLY RENOVATED IN THE LAST 3 YEARS
OVER 2500 SQ.FT. LIVABLE SPACE IN THIS
4 -LEVEL SPLIT ON 50X110 FEET

LOT.HOME HAS BEEN BEAUTIFULLY
RENOVATED WITH NEW FURNACE, HOT
WATER TANK, NEW KITCHEN WITH
ACRYLIC CABINETS,QUARTZ COUNTER
TOPS,COOKING RANGE, FRIDGE,CHIMNEY
HOODFAN, LIGHT FIXTURES,ALL 3 BRAND
NEW BATHROOMS WITH NEW
TILES,TOILET SET,SINK,COUNTER
TOPS,LIGHTS,EXAUST FAN,NEW WET-BAR
OF ACRYLIC CABINETS, NEW
FLOORING,PAINT,

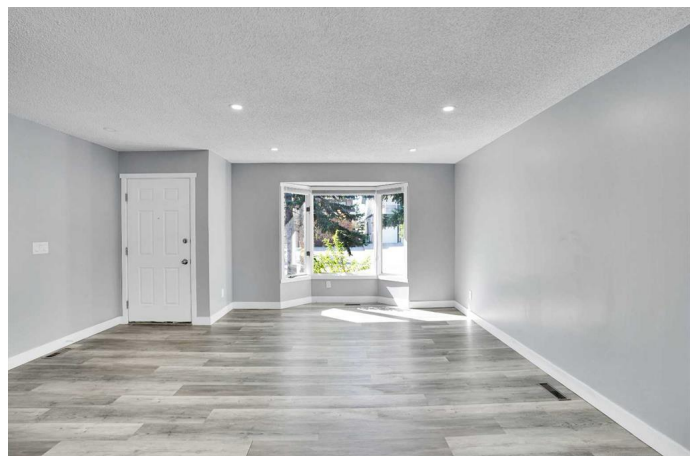
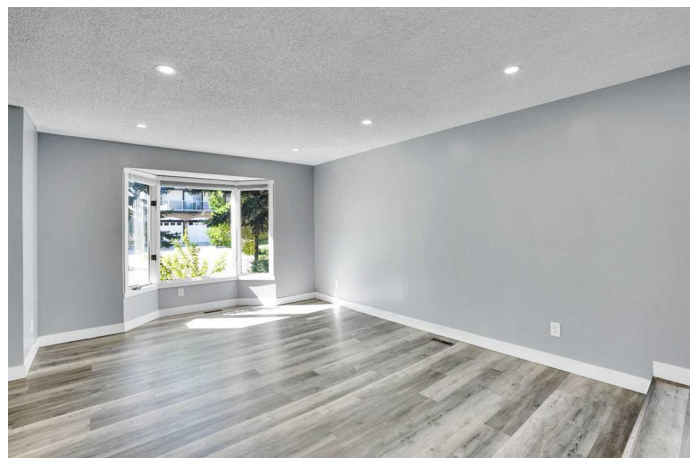
BASEBOARDS,INTERIOR DOORS,POT
LIGHTS,CEILING PAINT, EXTERIOR SIDING
PAINT CONCRETE WORK AND MUCH
MORE. 3 GOOD SIZE BEDROOMS AND
WASHROOMS. DOUBLE FRONT
ATTACHED HEATED GARAGE. VACANT
FOR QUICK POSSESSION.VERY EASY TO
SHOW ANY TIME.LOCATED IN THE
ESTATE AREA OF CASTLERIDGE.CLOSE
TO ALL THE AMENITIES
LIKE,SCHOOL,BUS,SHOPPING,BANKS AND
RESTAURANTS.A MUST TO SEE TO
APPRECIATE.

Built in 1980

Essential Information

MLS® #

A2251038



Price	\$635,000
Bedrooms	4
Bathrooms	3.00
Full Baths	3
Square Footage	1,361
Acres	0.13
Year Built	1980
Type	Residential
Sub-Type	Detached
Style	4 Level Split
Status	Active

Community Information

Address	35 Castlefall Grove Ne
Subdivision	Castleridge
City	Calgary
County	Calgary
Province	Alberta
Postal Code	t3j 1l1

Amenities

Parking Spaces	6
Parking	Double Garage Attached
# of Garages	2

Interior

Interior Features	Bar
Appliances	Dishwasher, Dryer, Electric Stove, Garage Control(s), Refrigerator, Washer
Heating	Forced Air
Cooling	None
Fireplace	Yes
# of Fireplaces	1
Fireplaces	Wood Burning
Has Basement	Yes
Basement	Finished, Full

Exterior

Exterior Features	Private Yard
-------------------	--------------

Lot Description	Back Yard, Front Yard, Landscaped
Roof	Asphalt Shingle
Construction	Brick, Concrete, Vinyl Siding, Wood Frame
Foundation	Poured Concrete

Additional Information

Date Listed	August 24th, 2025
Days on Market	8
Zoning	R-CG

Listing Details

Listing Office	Royal LePage METRO
----------------	--------------------

Data is supplied by Pillar 9â„¢ MLS® System. Pillar 9â„¢ is the owner of the copyright in its MLS® System. Data is deemed reliable but is not guaranteed accurate by Pillar 9â„¢. The trademarks MLS®, Multiple Listing Service® and the associated logos are owned by The Canadian Real Estate Association (CREA) and identify the quality of services provided by real estate professionals who are members of CREA. Used under license.