

\$330,000 - 11658 Sarcee Trail Nw, Calgary

MLS® #A2251535

\$330,000

0 Bedroom, 0.00 Bathroom,
Commercial on 0.00 Acres

Sherwood, Calgary, Alberta

Thriving Pizza Franchise Opportunity in
Northern Calgary

Step into ownership of a well-established pizza franchise that has been serving the community for over 16 years. Located in a busy shopping center, this restaurant holds the unique advantage of being the only pizza option in the plazaâ€™ guaranteeing steady traffic and repeat business.

With a strong sales history, much of it driven by a robust delivery service reaching a wide customer base daily, this business is a proven success. The locationâ€™s high visibility and consistent foot traffic make it a favorite for both dine-in guests and takeout orders.

As part of a trusted franchise brand, the restaurant benefits from powerful name recognition, loyal customers, and ongoing franchise support. The growing demand for quick-service dining and delivery creates excellent potential for continued growth and expansion.

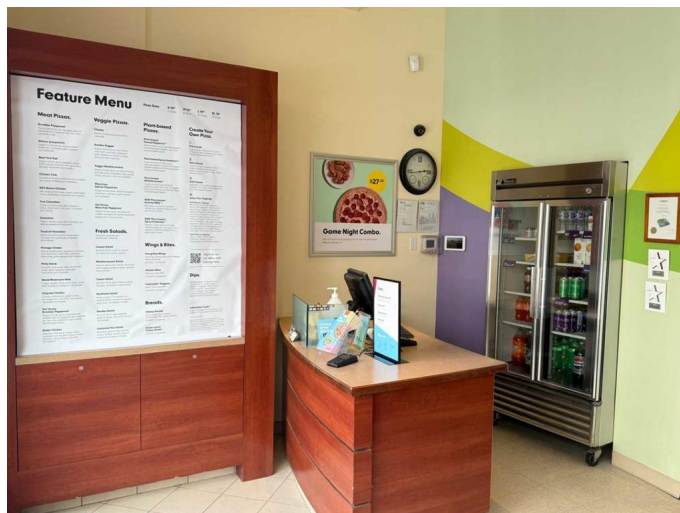
This is your chance to invest in a profitable, well-positioned business with a long track record and a bright future in Calgaryâ€™s thriving food scene.

Built in 2008

Essential Information

MLS® # A2251535

Price \$330,000



Bathrooms	0.00
Acres	0.00
Year Built	2008
Type	Commercial
Sub-Type	Business
Status	Active

Community Information

Address	11658 Sarcee Trail Nw
Subdivision	Sherwood
City	Calgary
County	Calgary
Province	Alberta
Postal Code	T3R0A1

Additional Information

Date Listed	August 23rd, 2025
Days on Market	8
Zoning	C

Listing Details

Listing Office	LPT Realty
----------------	------------

Data is supplied by Pillar 9â„¢ MLS® System. Pillar 9â„¢ is the owner of the copyright in its MLS® System. Data is deemed reliable but is not guaranteed accurate by Pillar 9â„¢. The trademarks MLS®, Multiple Listing Service® and the associated logos are owned by The Canadian Real Estate Association (CREA) and identify the quality of services provided by real estate professionals who are members of CREA. Used under license.